

# STOCK & INDICES RELEASE NOTES

JANUARY 2010 MONTHLY UPDATE

These release notes pertain to the January 2010 Monthly release of the CRSP US Stock and Indices databases.

This shipment of data utilizes the InstallShield® wizard. Because the data are compressed, data files are not accessible without first installing through the wizard. This applies to all CRSP data and software products. InstallShield® works for all three platforms: Windows, Linux, and Sun Solaris.

## JANUARY 2010 DATA EDITS

### INDIVIDUAL EDITS

PERMNO	COMPANY NAME	BEGIN DATE	END DATE	DESCRIPTION
83113	ARTHROCARE CORP	20090116	20100121	Added zero nameline for period 20090116 to 20100121 to reflect off-exchange trading.
79251	BELL MICROPRODUCTS INC	20080319	20100124	Added zero nameline for the period 20080319 to 20100124 to reflect off-exchange activity.
89102	GRANITE CITY FOOD & BREWERY LTD	20090803	20100113	Changed SIC code to 5812 from 7221 for 20090803-20100113
79336	LIBBEY INC	20090420	20100103	Added zero nameline for the period 20090420 to 20100103 to reflect off exchange trading.

### FILE VERSION SPECIFICS

This table contains version specific information for the CRSP Stock Files with data ending January 2010. It contains the number of securities and information about the maximums of the event arrays.

FILECODE	#OFSECURITIES	MAXNAMES	MAXDISTS	MAXSHARES	MAXDELISTS	MAXGROUPS	MAXNASDIN	FIRSTPERMNO	LASTPERMNO
DAZ	28276	39	1140	687	1	4	2139	10000	93324
MAZ	28246	39	1140	687	1	4	2139	10000	93324

CALENDAR	DATE RANGE	DATEINDEXRANGE
Daily trading calendar	19251231-20100129	1-22296
Month-endtradingcalendar	19251231-20100129	1-1010
Year-end trading calendar	19251231-20111230	1-87
Quarter-endtradingcalendar	19251231-20111230	1-345
Weekly trading calendar	19260102-20100129	1-4387

## CRSPACCESS PRODUCT INFORMATION

To simplify installation for our subscribers, data are bundled into product groups. Information relevant to each product group is listed.

PRODUCT NAME	DATABASE	MEDIA	SIZE	INDICES	PORTFOLIOS	COMPONENTS & DESCRIPTION
CRSP1925USStockwithIndices	FIZyyyyymm	DVD	3.5 GB	All CRSP indices and portfolio assignments	All portfolios	DI - 1925 Daily US Stock & Indices MI - 1925 Monthly US Stock & Indices IF - CRSP Supplemental US Indices
CRSP 1925 US Stock	FAZyyyyymm	DVD	3.1 GB	CRSP NYSE/ AMEX/ NASDAQ Value-weighted Market, CRSP NYSE/ AMEX/ NASDAQ Equal-weighted Market, S&P 500 Composite, NASDAQ Composite	NYSE/ AMEX/ NASDAQ Capitalization Deciles	DA - 1925 Daily US Stock MA - 1925 Monthly US Stock IN - CRSP Limited US Indices
CRSP 1962 US Stock	A6Zyyyyymm	DVD	2.7 GB	CRSP NYSE/ AMEX/ NASDAQ Value-weighted Market, CRSP NYSE/ AMEX/ NASDAQ Equal-weighted Market, S&P 500 Composite, NASDAQ Composite	NYSE/ AMEX/ NASDAQ Capitalization Deciles	D6 - 1962 Daily US Stock M6 - 1962 Monthly US Stock IN - CRSP Limited US Indices
CRSP1962USStockwithIndices	AXZyyyyymm	DVD	3.0 GB	See FIZ	All portfolios	DX - 1962 Daily US Stock & Indices MX - 1962 Monthly US Stock & Indices IF - CRSP Supplemental US Indices
CRSP 1925 US Indices	IFZyyyyymm	DVD	112 MB			IF - CRSP Supplemental US Indices
Daily & Monthly Treasuries	BAZyyyyymm	DVD	981 MB			BD - Daily Treasuries BA - Monthly Treasuries
Daily Treasuries	BDZyyyyymm	DVD	978 MB			BD - Daily Treasuries
Monthly Treasuries	BMZyyyyymm	DVD	84.5 MB			BM - Monthly Treasuries
Mutual Fund Database	MFZyyyyymm	DVD	3.8 GB			MF - Mutual Funds
CRSP/Ziman Daily & Monthly REIT	RAZyyyyymm	DVD	196 MB			RD - Daily REITs RM - Monthly REITs
CRSP/Ziman Monthly REIT	RMZyyyyymm	DVD	186 MB			RM - Monthly REITs

## DATA INSTALLATION

Instructions and screen shots for installation are written for Windows. Differences related to Linux and Sun or media are noted.

### WINDOWS:

To install data, insert your DVD into the drive and from the Start Menu, select Run d:\setupwin32.exe. Click OK.

### SUN SOLARIS (DVD INSTALL):

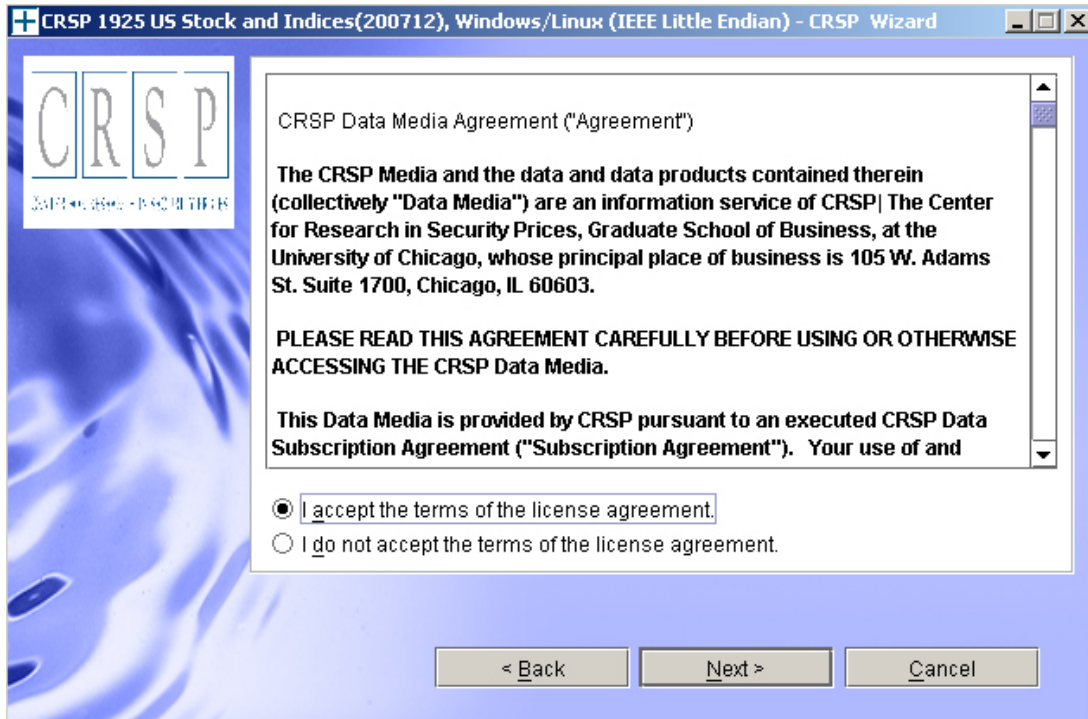
After inserting the DVD, a file manager will open with the file, `setupsolaris.bin`. Double click on this setup file to begin the installation process.

### LINUX(DVD INSTALL):

Upon insertion of the DVD, a file manager will open with the file, `setuplinux.bin`. Double click on this setup file to begin the installation process.

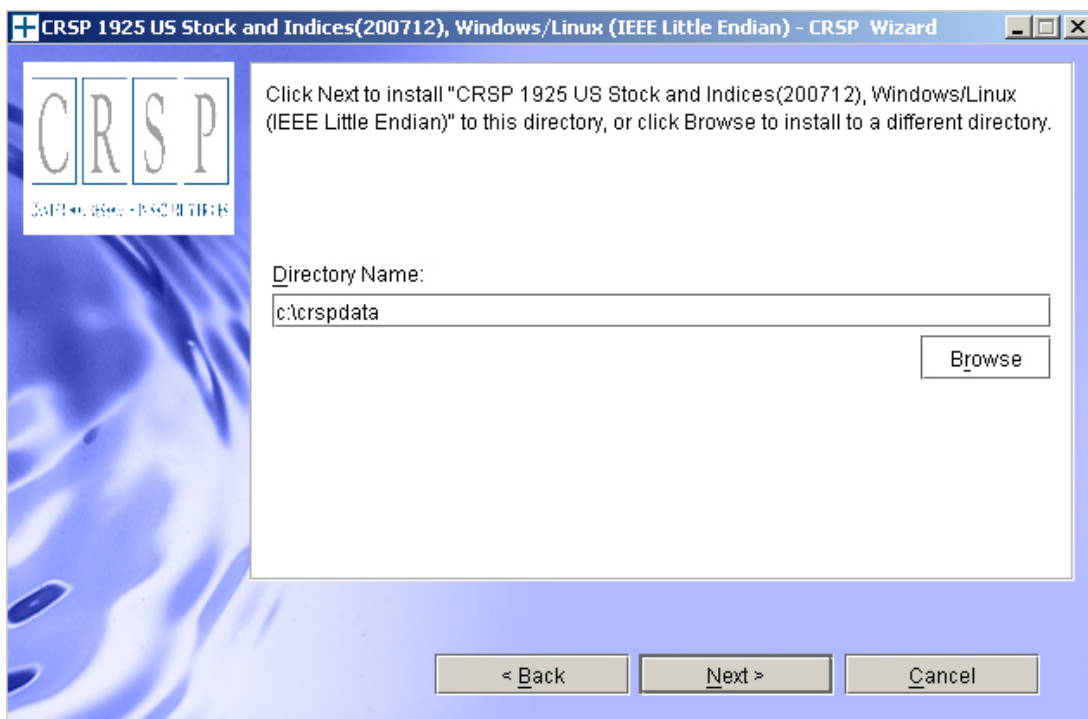


After clicking on **Next** on the Welcome screen, scroll through and read the CRSP Data and Utilities Agreement. Click to accept the terms of the license agreement. Click **Next**.

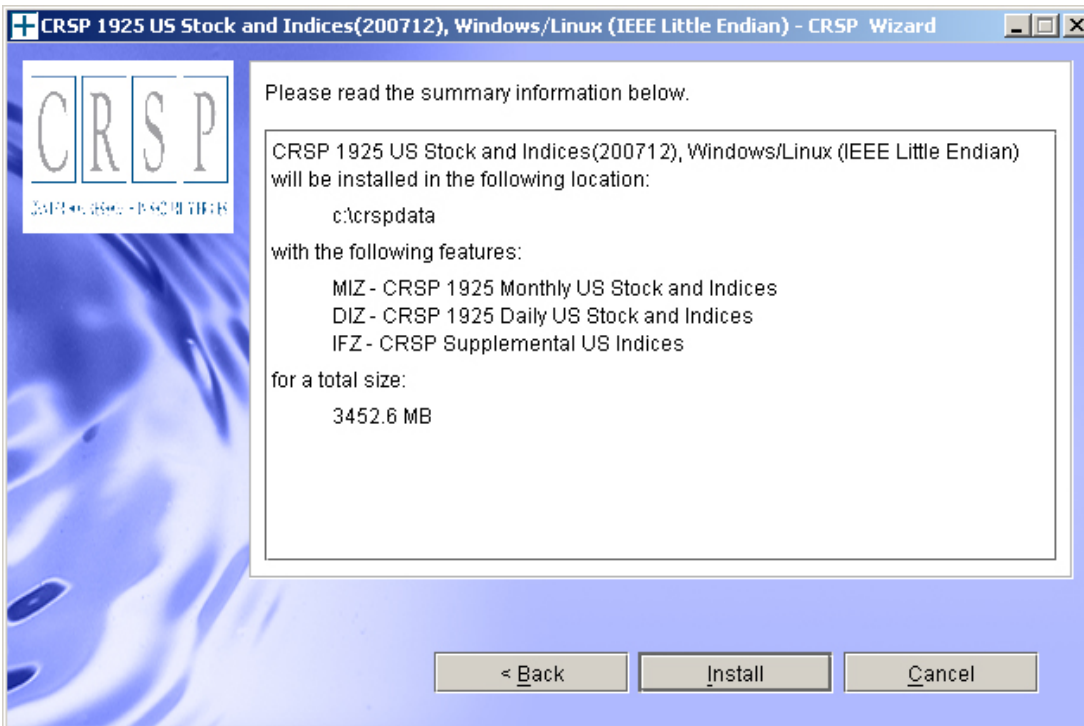


**WINDOWS:** The default directory for the data installation is `c:\crspdata`. You may accept or modify it. Click **Next**. Note: InstallShield does not verify available space. Please see the CRSPAccess Product Information chart on page 2 for space required for installation.

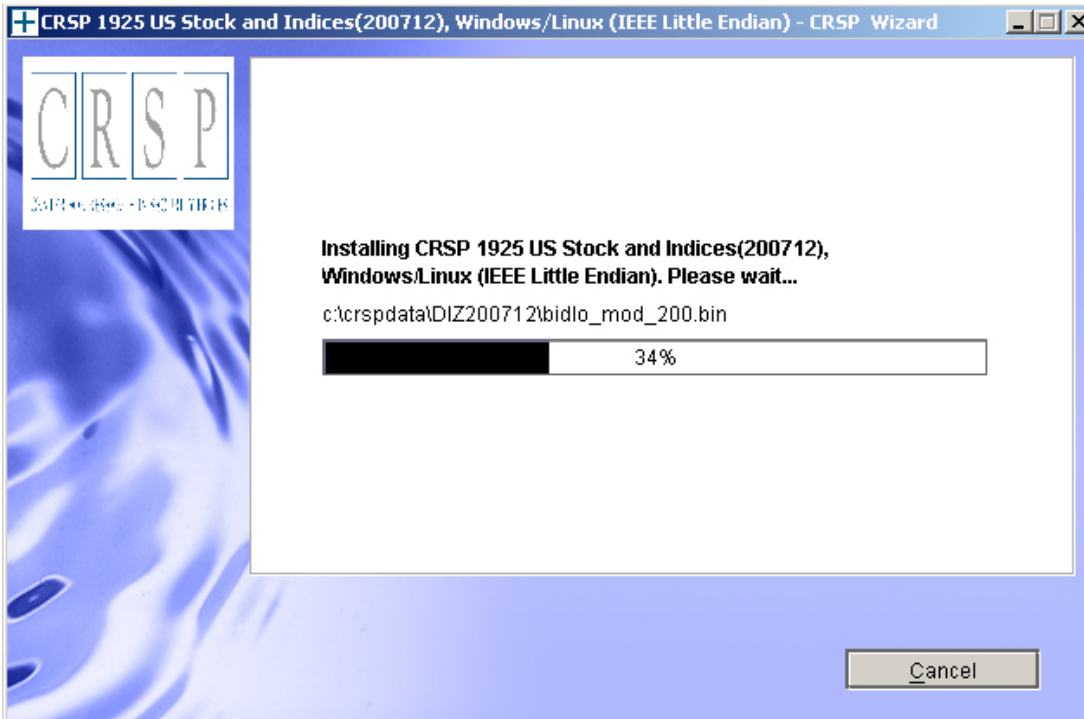
**SUN SOLARIS & LINUX:** The default directory for the data installation is `/crspdata`. You must have write permission to the directory you specify, for example, `/home/username/crspdata`. Note: InstallShield does not verify available space. Please see the CRSPAccess Product Information chart on page 2 for space required for installation.



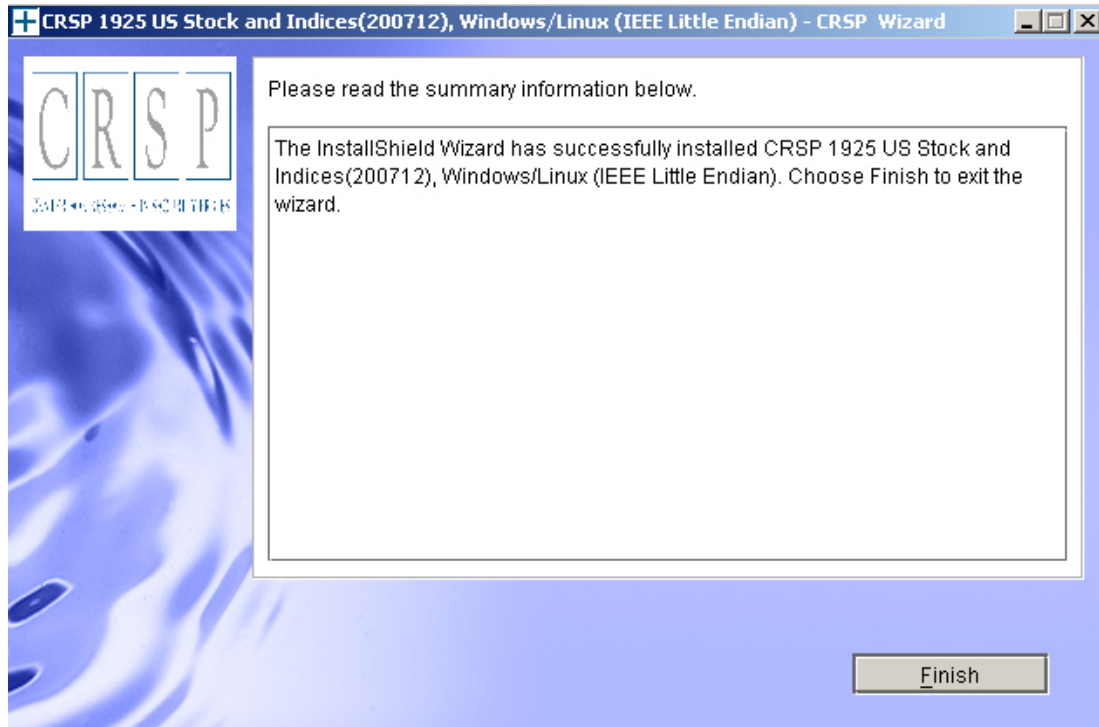
Summary information is displayed: Location, data components and the amount of space that is required for the data. Click on **Install** to proceed.



The screen will display the status of the installation.



A message indicating the success of the installation appears when the process is complete. Click **Finish**.



#### SUN SOLARIS & LINUX:

After clicking Finish, a file named `crsp.kshrc` must be run to set the local environment variables. At the prompt, type:

```
. ./crsp.kshrc <enter>
```

Note: If you are not using `ksh`, modifications will be necessary. Check with your Unix administrator.

## WINDOWS:

Location of the software and data may be checked by opening CRSP Client Environment from the CRSPAccess menu. This new utility provides users a quick and simple way of both checking and switching environment variables if necessary. Where, in the past, users had to go through the Control Panel to manipulate the environment variables, this can now be done by quick editing of the Client Environment screen.

*Note: For subscribers of the CRSP Compustat Merged database, an additional CCM database environment will be displayed for the location of the Compustat data.*

**CRSPAccess Client Environment**

**CRSP Root**  
CRSP Root Directory  
This folder/directory contains the CRSP root subfolders that will allow the CRSP utilities to function properly.  
C:\CRSP Browse

**CRSP Monthly Stock**  
CRSP Monthly Stock Database Directory  
c:\crspdata\MIZ200712\ Browse

**CRSP Daily Stock**  
CRSP Daily Stock Database Directory  
c:\crspdata\DIZ200712\ Browse

**CRSP Work**  
CRSP Work Directory  
This folder/directory is used for storage of temporary files, log files and contains subfolders that may hold user created files  
C:\CRSP\work\ Browse

**CRSP Compustat CCM**  
CRSP Compustat Merged Database Directory  
c:\crspdata\CPZ200712\ Browse

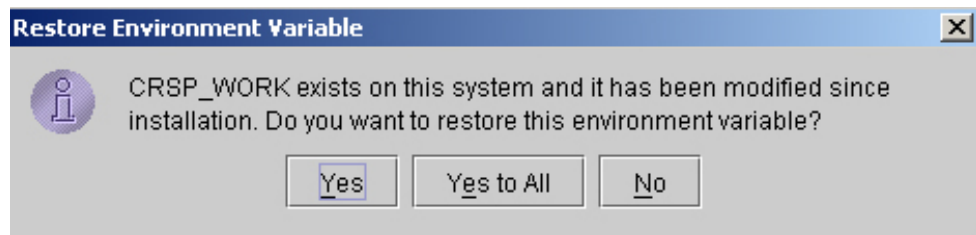
Do Remove Exit

## UNINSTALL

For each data install, an uninstall is created on the CRSPAccess menu. Data uninstalls do not touch software environment variables. Likewise, software uninstalls do not touch data environment variables. Each uninstall is done separately. As with the install, the uninstall is wizard-driven. When uninstall is complete, users may be prompted with an option to either reboot the computer or wait until later. It is not necessary to reboot the computer after uninstalling. This reboot message may be disregarded.

### Uninstall & CRSP Client Environment

Each time a path is modified in client environment, the action is recorded. Upon running `uninstall`, a *Restore Environment Variable* prompt will appear:



This prompt appears for each variable for each modification. Answer each prompt and continue cycling through. **Y**es is the default, which will restore environment variables back to what they were prior to the install.