

CRSP/COMPUSTAT MERGED DATABASE RELEASE NOTES

APRIL 2008 MONTHLY UPDATE

INTRODUCTION

These release notes accompany the April 2008 monthly cut of the CRSP/Compustat Merged Database (CCM). The CCM files are updated monthly based on Compustat's final research cuts and shipped monthly, quarterly or annually. Files are delivered on a single compressed CD-ROM and installed using an InstallShield wizard. Please refer to our website for CRSPAccess Release Notes for full product information and for Documents and Guides for all CRSP products at:

<http://www.crsp.chicagogsb.edu/support/documentation>

UPDATE ON NEW CCM DATABASE DELIVERY

CRSP expects to deliver the new CCM database created from the Xpressfeed process by September 2008. Our annual and quarterly subscribers will receive a shipment of the CST annual-cut data in the new CCM format. Our monthly subscribers will receive a new CCM-format database that will be the same cut as the most recent CST-format database. Tools in CRSPSift and CRSPAccess will be shipped for users to access the new Xpressfeed data items in the CCM-format database.

CCM DATA CREATED FROM XPRESSFEED INPUTS

CRSP is now creating the CRSP/Compustat Merged database using new Xpressfeed inputs from Compustat. In this first phase of the transition, the format of the CCM databases is unchanged (CST) and it will continue to work with your existing tools.

ABOUT THE APRIL 2008

CRSP/COMPUSTAT MERGED DATABASE:

The Compustat cut date for this release is April 11, 2008. The database is shipped in its entirety with historical edits for restatements and corrections for each release.

The CD label for the CCM database is CPZ.

CPZ: CRSP Stock and Indices with Compustat data. PDE market data is for listed and research companies.

The database is delivered and supported on three platforms: Windows, Linux and Solaris. It has been tested on CRSPAccess 2.97 and is supported on CRSPAccess versions 2.91 and higher.

PARAMETERS:

- The number of CRSP Securities in the CPZ database is 23,823.
- The number of GVKEYs in the CPZ database is 33,231.
- The number of links in the CPZ database is 55,158.
- Database size is approximately 2.35 Gb.

CALENDARS

The CCM database utilizes the CRSP stock calendars to align properly with CRSP data. Data in the CRSP daily Stock (and Indices) file use daily and annual calendars.

Data in the monthly files use monthly, quarterly and annual calendars.

| Calendar | Date Range | Date Index Range |
|------------------------------|-------------------|------------------|
| Daily trading calendar | 19251231-20080411 | 1-21842 |
| Month-end trading calendar | 19251231-20091231 | 1-1009 |
| Year-end trading calendar | 19251231-20091231 | 1-85 |
| Quarter-end trading calendar | 19251231-20091231 | 1-337 |
| Weekly trading calendar | 19260102-20080411 | 1-4293 |



CENTER FOR RESEARCH IN SECURITY PRICES

A Research Center at ChicagoGSB

DATA EDITS

APRIL 2008 DATA EDITS

GVKEY 107965 (QUATERRA RESOURCES INC)

OLD:

| LINKDT | LINKENDDT | PERMNO | PERMCO | LINKTYPE | LINKFLAG |
|----------|-----------|--------|--------|----------|----------|
| 20051021 | 99999999 | 0 | 0 | NR | XXX |

NEW:

| LINKDT | LINKENDDT | PERMNO | PERMCO | LINKTYPE | LINKFLAG |
|----------|-----------|--------|--------|----------|----------|
| 20051021 | 20080302 | 0 | 0 | NR | XXX |
| 20080303 | 99999999 | 92607 | 52980 | LC | BBB |

GVKEY 179066 (TREMISIS ENERGY ACQ CORP II)

OLD:

| LINKDT | LINKENDDT | PERMNO | PERMCO | LINKTYPE | LINKFLAG |
|----------|-----------|--------|--------|----------|----------|
| 20071208 | 99999999 | 0 | 0 | NR | XXX |

NEW:

| LINKDT | LINKENDDT | PERMNO | PERMCO | LINKTYPE | LINKFLAG |
|----------|-----------|--------|--------|----------|----------|
| 20071208 | 20080304 | 0 | 0 | NR | XXX |
| 20080305 | 99999999 | 92610 | 52906 | LC | BBB |

GVKEY 179305 (OVERTURE ACQUISITION CORP)

OLD:

| LINKDT | LINKENDDT | PERMNO | PERMCO | LINKTYPE | LINKFLAG |
|----------|-----------|--------|--------|----------|----------|
| 20080209 | 99999999 | 0 | 0 | NR | XXX |

NEW:

| LINKDT | LINKENDDT | PERMNO | PERMCO | LINKTYPE | LINKFLAG |
|----------|-----------|--------|--------|----------|----------|
| 20070419 | 20080302 | 0 | 0 | NR | XXX |
| 20080303 | 99999999 | 92613 | 52943 | LC | BBB |

GVKEY 16784 (COMMERCE BANCORP INC/NJ)

OLD:

| LINKDT | LINKENDDT | PERMNO | PERMCO | LINKTYPE | LINKFLAG |
|----------|-----------|--------|--------|----------|----------|
| 19840101 | 19841017 | 0 | 0 | NU | XXX |
| 19841018 | 99999999 | 86845 | 7263 | LU | BBB |

NEW:

| LINKDT | LINKENDDT | PERMNO | PERMCO | LINKTYPE | LINKFLAG |
|----------|-----------|--------|--------|----------|----------|
| 19840101 | 19841017 | 0 | 0 | NR | XXX |
| 19841018 | 20080328 | 86845 | 7263 | LC | BBB |

GVKEY 155735 (AMIS HOLDINGS INC)

OLD:

| LINKDT | LINKENDDT | PERMNO | PERMCO | LINKTYPE | LINKFLAG |
|----------|-----------|--------|--------|----------|----------|
| 20000101 | 20030923 | 0 | 0 | NR | XXX |
| 20030924 | 99999999 | 89830 | 44377 | LC | BBB |

NEW:

| LINKDT | LINKENDDT | PERMNO | PERMCO | LINKTYPE | LINKFLAG |
|----------|-----------|--------|--------|----------|----------|
| 20000101 | 20030923 | 0 | 0 | NR | XXX |
| 20030924 | 20080317 | 89830 | 44377 | LC | BBB |

GVKEY 14385 (RESPIRONICS INC)

OLD:

| LINKDT | LINKENDDT | PERMNO | PERMCO | LINKTYPE | LINKFLAG |
|----------|-----------|--------|--------|----------|----------|
| 19870630 | 19880511 | 0 | 0 | NU | XXX |
| 19880512 | 99999999 | 11927 | 9777 | LU | BBB |

NEW:

| LINKDT | LINKENDDT | PERMNO | PERMCO | LINKTYPE | LINKFLAG |
|----------|-----------|--------|--------|----------|----------|
| 19870630 | 19880511 | 0 | 0 | NR | XXX |
| 19880512 | 20080314 | 11927 | 9777 | LC | BBB |

GVKEY 30584 (A S V INC)

OLD:

| LINKDT | LINKENDDT | PERMNO | PERMCO | LINKTYPE | LINKFLAG |
|----------|-----------|--------|--------|----------|----------|
| 19930101 | 19940810 | 0 | 0 | NU | XXX |
| 19940811 | 20080304 | 80798 | 13255 | LU | BBB |

NEW:

| LINKDT | LINKENDDT | PERMNO | PERMCO | LINKTYPE | LINKFLAG |
|----------|-----------|--------|--------|----------|----------|
| 19930101 | 19940810 | 0 | 0 | NR | XXX |
| 19940811 | 20080303 | 80798 | 13255 | LC | BBB |

GVKEY 7991 (TEREX CORP)

OLD:

| LINKDT | LINKENDDT | PERMNO | PERMCO | LINKTYPE | LINKFLAG |
|----------|-----------|--------|--------|----------|----------|
| 19620101 | 19731106 | 0 | 0 | NU | XXX |
| 19731107 | 99999999 | 58318 | 3302 | LU | BBB |

NEW:

| LINKDT | LINKENDDT | PERMNO | PERMCO | LINKTYPE | LINKFLAG |
|----------|-----------|--------|--------|----------|----------|
| 19620101 | 19731106 | 0 | 0 | NR | XXX |
| 19731107 | 19820708 | 58318 | 3302 | LC | BBB |
| 19820709 | 19821031 | 0 | 0 | NR | XXX |
| 19821101 | 99999999 | 58318 | 3302 | LC | BBB |

GVKEY 20217 (QUEST RESOURCE CORP)

OLD:

| LINKDT | LINKENDDT | PERMNO | PERMCO | LINKTYPE | LINKFLAG |
|----------|-----------|--------|--------|----------|----------|
| 19830601 | 19900116 | 0 | 0 | NR | XXX |
| 19900117 | 19900914 | 76456 | 10462 | LU | BBB |
| 19900915 | 20060410 | 0 | 0 | NR | XXX |
| 20060411 | 99999999 | 76465 | 10462 | LC | BBB |

NEW:

| LINKDT | LINKENDDT | PERMNO | PERMCO | LINKTYPE | LINKFLAG |
|----------|-----------|--------|--------|----------|----------|
| 19830601 | 19900116 | 0 | 0 | NR | XXX |
| 19900117 | 19900916 | 76465 | 10462 | LC | BBB |
| 19900917 | 20060410 | 0 | 0 | NR | XXX |
| 20060411 | 99999999 | 76465 | 10462 | LC | BBB |

GVKEY 65350 (SOLUTIA INC)

OLD:

| LINKDT | LINKENDDT | PERMNO | PERMCO | LINKTYPE | LINKFLAG |
|----------|-----------|--------|--------|----------|----------|
| 19920101 | 19970902 | 0 | 0 | NR | XXX |
| 19970903 | 20031216 | 85266 | 32063 | LC | BBB |
| 20031217 | 99999999 | 0 | 0 | NR | XXX |

NEW:

| LINKDT | LINKENDDT | PERMNO | PERMCO | LINKTYPE | LINKFLAG |
|----------|-----------|--------|--------|----------|----------|
| 19920101 | 19970902 | 0 | 0 | NR | XXX |
| 19970903 | 20031216 | 85266 | 32063 | LC | BBB |
| 20031217 | 20080302 | 0 | 0 | NR | XXX |
| 20080303 | 99999999 | 92505 | 32063 | LC | BBB |

GVKEY 112473 (ADAMS GOLF INC)

OLD:

| LINKDT | LINKENDDT | PERMNO | PERMCO | LINKTYPE | LINKFLAG |
|----------|-----------|--------|--------|----------|----------|
| 19980710 | 20070418 | 86237 | 16207 | LU | BBB |
| 20070419 | 99999999 | 0 | 0 | NU | XXX |

NEW:

| LINKDT | LINKENDDT | PERMNO | PERMCO | LINKTYPE | LINKFLAG |
|----------|-----------|--------|--------|----------|----------|
| 19980710 | 20030521 | 86237 | 16207 | LC | BBB |
| 20030522 | 20080312 | 0 | 0 | NR | XXX |
| 20080313 | 99999999 | 86237 | 16207 | LC | BBB |

GVKEY 1440 (AMERICAN ELECTRIC POWER CO)

OLD:

| LINKDT | LINKENDDT | PERMNO | PERMCO | LINKTYPE | LINKFLAG |
|----------|-----------|--------|--------|----------|----------|
| 19510101 | 99999999 | 24109 | 20077 | LU | BBB |

NEW:

| LINKDT | LINKENDDT | PERMNO | PERMCO | LINKTYPE | LINKFLAG |
|----------|-----------|--------|--------|----------|----------|
| 19510101 | 99999999 | 24109 | 20077 | LC | BBB |

GVKEY 3640 (CUCOS INC)

OLD:

| LINKDT | LINKENDDT | PERMNO | PERMCO | LINKTYPE | LINKFLAG |
|----------|-----------|--------|--------|----------|----------|
| 19820701 | 19831214 | 0 | 0 | NU | XXX |
| 19831215 | 19990202 | 27861 | 6709 | LU | BBB |
| 19990203 | 20040122 | 0 | 0 | NU | XXX |

NEW:

| LINKDT | LINKENDDT | PERMNO | PERMCO | LINKTYPE | LINKFLAG |
|----------|-----------|--------|--------|----------|----------|
| 19820701 | 19831214 | 0 | 0 | NR | XXX |
| 19831215 | 19990202 | 27861 | 6709 | LC | BBB |
| 19990203 | 99999999 | 0 | 0 | NR | XXX |

GVKEY 5639 (HILL-ROM HOLDINGS INC)

OLD:

| LINKDT | LINKENDDT | PERMNO | PERMCO | LINKTYPE | LINKFLAG |
|----------|-----------|--------|--------|----------|----------|
| 19701201 | 19710627 | 0 | 0 | NU | XXX |
| 19710628 | 99999999 | 52716 | 20913 | LU | BBB |

NEW:

| LINKDT | LINKENDDT | PERMNO | PERMCO | LINKTYPE | LINKFLAG |
|----------|-----------|--------|--------|----------|----------|
| 19701201 | 19710627 | 0 | 0 | NR | XXX |
| 19710628 | 20080331 | 52716 | 20913 | LC | BBB |
| 20080401 | 99999999 | 92597 | 52975 | LN | BBB |

GVKEY 9724 (SILICON VALLEY RESEARCH INC)

OLD:

| LINKDT | LINKENDDT | PERMNO | PERMCO | LINKTYPE | LINKFLAG |
|----------|-----------|--------|--------|----------|----------|
| 19830429 | 19840508 | 0 | 0 | NU | XXX |
| 19840509 | 19981116 | 70675 | 7018 | LU | BBB |
| 19981117 | 20040219 | 0 | 0 | NU | XXX |

NEW:

| LINKDT | LINKENDDT | PERMNO | PERMCO | LINKTYPE | LINKFLAG |
|----------|-----------|--------|--------|----------|----------|
| 19830429 | 19840508 | 0 | 0 | NR | XXX |
| 19840509 | 19920405 | 70675 | 7018 | LC | BBB |
| 19920406 | 19950907 | 0 | 0 | NR | XXX |
| 19950908 | 20080411 | 70675 | 7018 | LC | BBB |
| 20080412 | 99999999 | 0 | 0 | NR | XXX |

GVKEY 23752 (PEOPLES BANCORP AUBURN IN)

OLD:

| LINKDT | LINKENDDT | PERMNO | PERMCO | LINKTYPE | LINKFLAG |
|----------|-----------|--------|--------|----------|----------|
| 19861001 | 19870706 | 0 | 0 | NU | XXX |
| 19870707 | 99999999 | 11493 | 9325 | LU | BBB |

NEW:

| LINKDT | LINKENDDT | PERMNO | PERMCO | LINKTYPE | LINKFLAG |
|----------|-----------|--------|--------|----------|----------|
| 19861001 | 19870706 | 0 | 0 | NR | XXX |
| 19870707 | 20080327 | 11493 | 9325 | LC | BBB |

GVKEY 28199 (ABSOLUTE ENTERTAINMENT INC)

OLD:

| LINKDT | LINKENDDT | PERMNO | PERMCO | LINKTYPE | LINKFLAG |
|----------|-----------|--------|--------|----------|----------|
| 19880101 | 19930429 | 0 | 0 | NU | XXX |
| 19930430 | 19941026 | 79068 | 12110 | LU | BBB |
| 19941027 | 19950630 | 0 | 0 | NU | XXX |

NEW:

| LINKDT | LINKENDDT | PERMNO | PERMCO | LINKTYPE | LINKFLAG |
|----------|-----------|--------|--------|----------|----------|
| 19880101 | 19930429 | 0 | 0 | NR | XXX |
| 19930430 | 19941026 | 79068 | 12110 | LC | BBB |
| 19941027 | 99999999 | 0 | 0 | NR | XXX |

GVKEY 9402 (MOVIE STAR INC)

OLD:

| LINKDT | LINKENDDT | PERMNO | PERMCO | LINKTYPE | LINKFLAG |
|----------|-----------|--------|--------|----------|----------|
| 19670701 | 19690323 | 0 | 0 | NR | XXX |
| 19690324 | 20071231 | 48020 | 21563 | LC | BBB |
| 20080101 | 99999999 | 0 | 0 | NR | XXX |

NEW:

| LINKDT | LINKENDDT | PERMNO | PERMCO | LINKTYPE | LINKFLAG |
|----------|-----------|--------|--------|----------|----------|
| 19670701 | 19690323 | 0 | 0 | NR | XXX |
| 19690324 | 20070128 | 48020 | 21563 | LC | BBB |

GVKEY 3865 (MOVIE STAR INC)

OLD:

| LINKDT | LINKENDDT | PERMNO | PERMCO | LINKTYPE | LINKFLAG |
|----------|-----------|--------|--------|----------|----------|
| 19790101 | 19801125 | 0 | 0 | NR | XXX |
| 19801126 | 19840626 | 29357 | 1286 | LC | BBB |
| 19840627 | 99999999 | 0 | 0 | NR | XXX |

NEW:

| LINKDT | LINKENDDT | PERMNO | PERMCO | LINKTYPE | LINKFLAG |
|----------|-----------|--------|--------|----------|----------|
| 19670701 | 19690323 | 0 | 0 | NR | XXX |
| 19690324 | 20080128 | 48020 | 21563 | LC | BBB |

GVKEY 23752 (PEOPLES BANCORP AUBURN IN)

OLD:

| LINKDT | LINKENDDT | PERMNO | PERMCO | LINKTYPE | LINKFLAG |
|----------|-----------|--------|--------|----------|----------|
| 19861001 | 19870706 | 0 | 0 | NU | XXX |
| 19870707 | 99999999 | 11493 | 9325 | LU | BBB |

NEW:

| LINKDT | LINKENDDT | PERMNO | PERMCO | LINKTYPE | LINKFLAG |
|----------|-----------|--------|--------|----------|----------|
| 19861001 | 19870706 | 0 | 0 | NR | XXX |
| 19870707 | 20080327 | 11493 | 9325 | LC | BBB |

DATA INSTALLATION

Instructions and screen shots for installation are written for Windows. Differences related to Linux and Sun are noted.

WINDOWS:

To install data, insert your CD into the drive and from the Start Menu, select Run `d:\setupwin32.exe`. Click OK.

SUN SOLARIS:

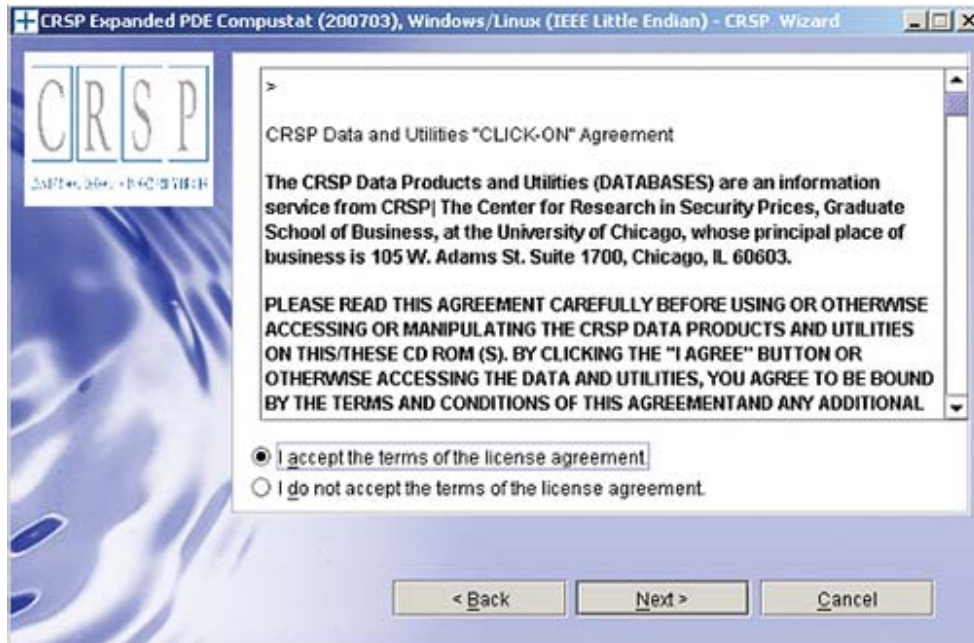
After inserting the CD, a terminal will open with the file, `setupsolaris.bin`. Double click on this setup file to begin the installation process.

LINUX:

Upon insertion of the CD, a terminal will open with the file, `setuplinux.bin`. Double click on this setup file and open a terminal to begin the installation process.



After you have clicked **Next** on the Welcome screen, scroll through and read the CRSP Data and Utilities Agreement. Click to accept the terms of the license agreement, and assuming you do, click **Next**.

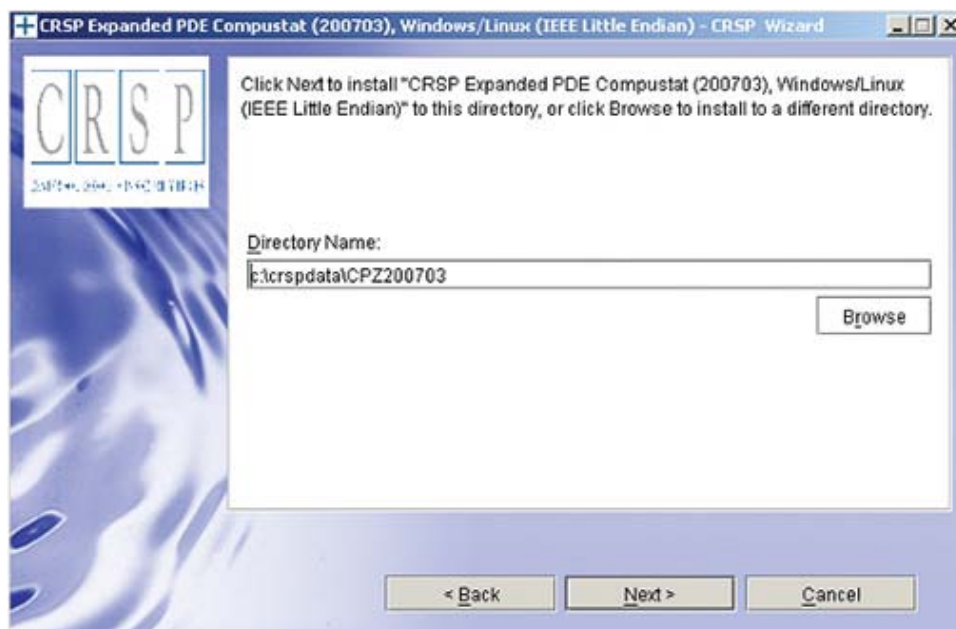


WINDOWS:

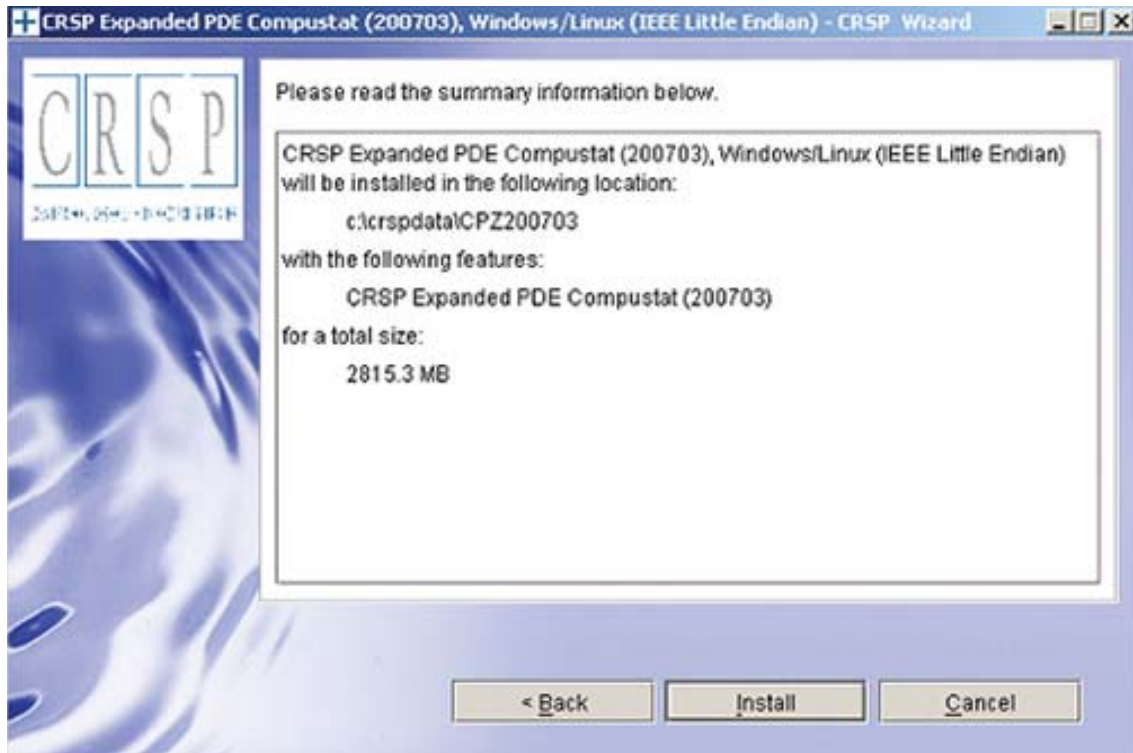
The default directory for the data installation is `c:\crspdata\cczyyyyymm`. You may accept or modify it. Click **Next**. **Note:** InstallShield does not verify available space. Please see the database parameters on page 1 for space required for installation.

SUN SOLARIS & LINUX:

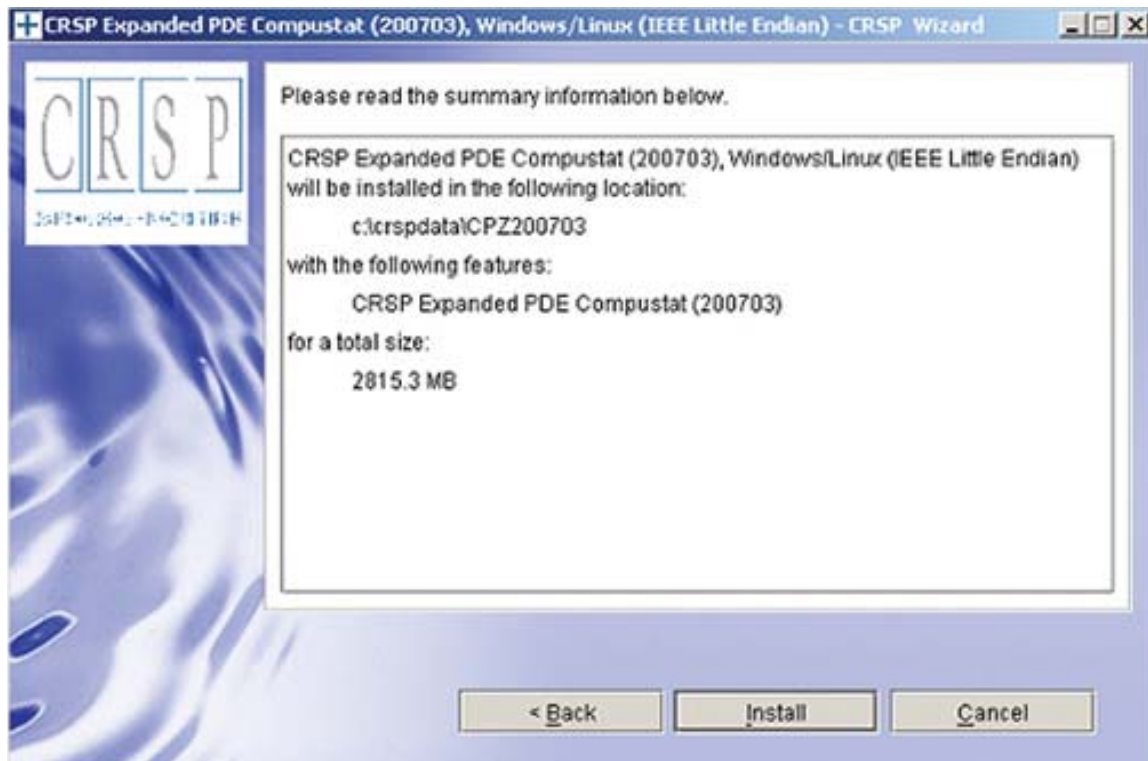
The default directory for the data installation is `/crspdata`. You must have write permission to the directory you specify, for example, `/home/username/crspdata`. **Note:** InstallShield does not verify available space. Please see the database parameters on page 1 for space required for installation.



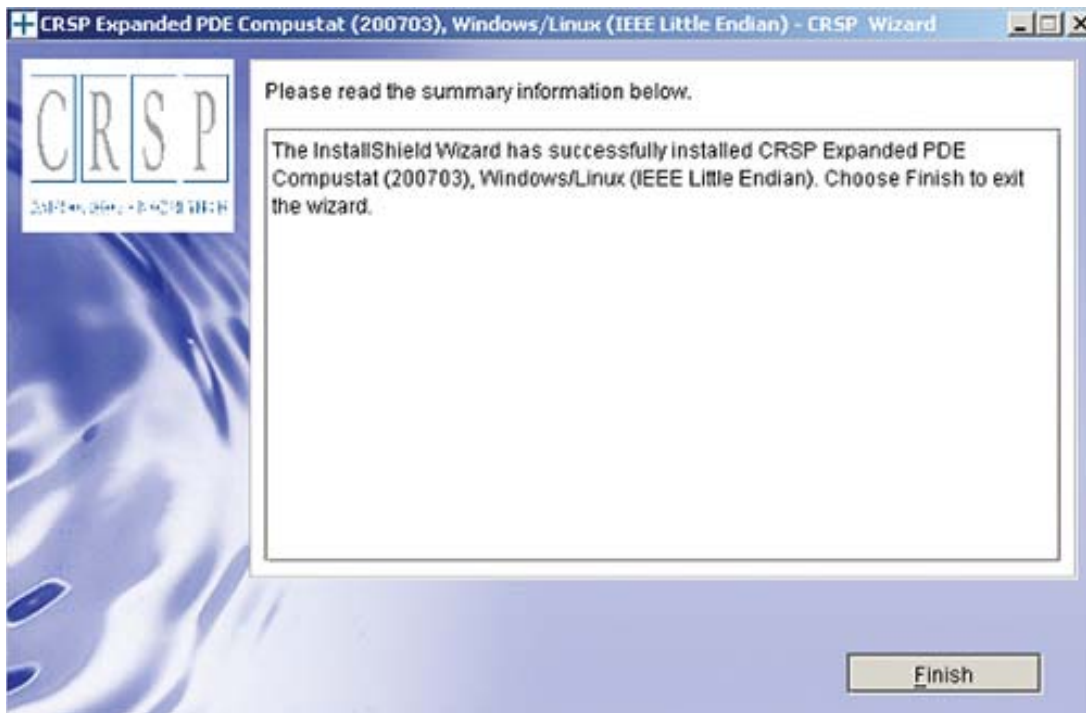
Summary information is displayed: Location, data components and the amount of space that is required for the data. Click on **Install** to proceed.



The screen will display the status of your installation.



A message indicating the success of the installation appears when the process is complete. Click **Finish**.



SUN SOLARIS & LINUX:

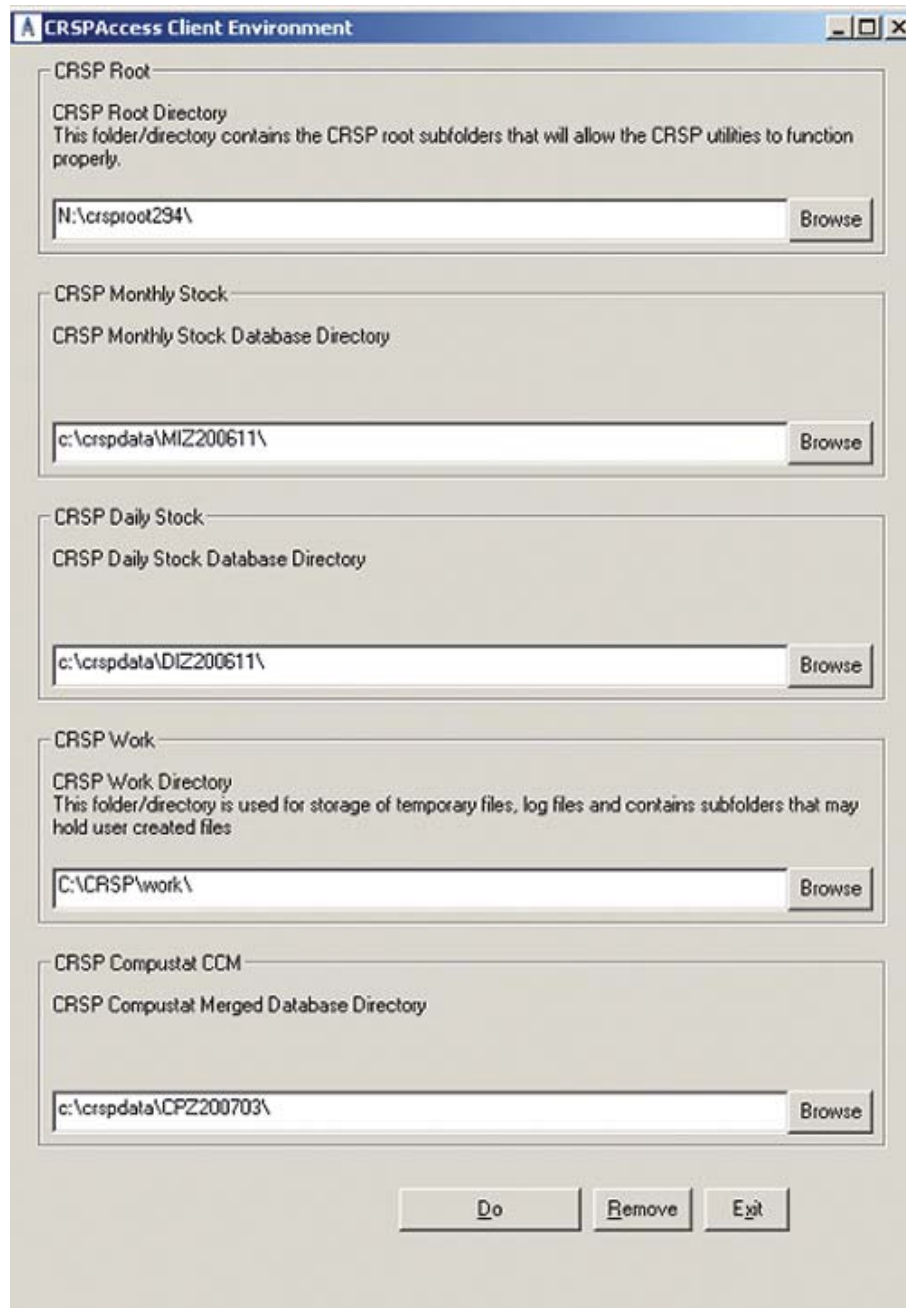
After clicking Finish, a file named `crsp.kshrc` must be run to set the local environment variable for the database. At the prompt, type:

```
>. ./crsp.kshrc <enter>
```

Note: If you are not using `ksh`, modifications will be necessary. Check with your Unix administrator.

WINDOWS:

Location of the software and data may be checked by opening **CRSP Client Environment** from the CRSPAccess menu. This new utility provides users a quick and simple way of both checking and switching environment variables if necessary. Where, in the past, users had to go through the Control Panel to manipulate the environment variables, this can now be done by quick editing of the Client Environment screen.

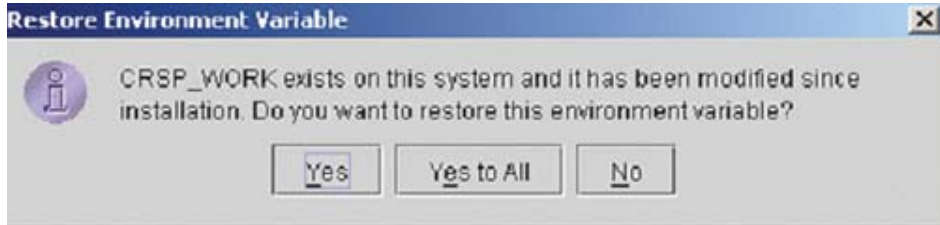


UNINSTALL

For each data install, an uninstall is created on the CRSPAccess menu. Data uninstalls do not touch software. Likewise, software uninstalls do not touch data. Each uninstall is done separately. As with the install, the uninstall is wizard-driven. When installation of either software or data is complete, users may be prompted with an option to either reboot the computer or wait until later.

Uninstall & CRSP Client Environment

Each time a path is modified in client environment, the action is recorded. Upon running `uninstall`, a *Restore Environment Variable* prompt will appear:



This prompt appears for each variable for each modification. Answer each prompt and continue cycling through. **Yes** is the default, which will restore environment variables back to what they were prior to the install.