

CRSP/COMPUSTAT MERGED DATABASE RELEASE NOTES

MAY 2008 MONTHLY UPDATE

INTRODUCTION

These release notes accompany the May 2008 monthly cut of the CRSP/Compustat Merged Database (CCM). The CCM files are updated monthly based on Compustat's final research cuts and shipped monthly, quarterly or annually. Files are delivered on a single compressed CD-ROM and installed using an InstallShield wizard. Please refer to our website for CRSPAccess Release Notes for full product information and for Documents and Guides for all CRSP products at:

<http://www.crsp.chicagogsb.edu/support/documentation>

UPDATE ON NEW CCM DATABASE DELIVERY

CRSP expects to deliver the new CCM database created from the Xpressfeed process by September 2008. Our annual and quarterly subscribers will receive a shipment of the CST annual-cut data in the new CCM format. Our monthly subscribers will receive a new CCM-format database that will be the same cut as the most recent CST-format database. Tools in CRSPSift and CRSPAccess will be shipped for users to access the new Xpressfeed data items in the CCM-format database.

UPCOMING BANK FILE CHANGE

Effective August 31, 2008, Compustat will no longer produce the FTP Bank files and will provide bank data only through its Xpressfeed delivery. CRSP will include the FTP Bank files in the current CST format database for as long as they are available. The new Xpressfeed bank data will only be available in the new CCM format database that we expect to ship in September.

ABOUT THE MAY 2008

CRSP/COMPUSTAT MERGED DATABASE:

The Compustat cut date for this release is April 11, 2008. The database is shipped in its entirety with historical edits for restatements and corrections for each release.

The CD label for the CCM database is CPZ.

CPZ: CRSP Stock and Indices with Compustat data. PDE market data is for listed and research companies.

The database is delivered and supported on three platforms: Windows, Linux and Solaris. It has been tested on CRSPAccess 2.97 and is supported on CRSPAccess versions 2.91 and higher.

PARAMETERS:

- The number of CRSP Securities in the CPZ database is 23,836.
- The number of GVKEYs in the CPZ database is 33,280.
- The number of links in the CPZ database is 55,220.
- Database size is approximately 2.35 Gb.

CALENDARS

The CCM database utilizes the CRSP stock calendars to align properly with CRSP data. Data in the CRSP daily Stock (and Indices) file use daily and annual calendars. Data in the monthly files use monthly, quarterly and annual calendars.

Calendar	Date Range	Date Index Range
Daily trading calendar	19251231-20080509	1-21862
Month-end trading calendar	19251231-20091231	1-1009
Year-end trading calendar	19251231-20091231	1-85
Quarter-end trading calendar	19251231-20091231	1-337
Weekly trading calendar	19260102-20080509	1-4297



CENTER FOR RESEARCH IN SECURITY PRICES

A Research Center at ChicagoGSB

DATA EDITS

MAY 2008 DATA EDITS

GVKEY 25276 (NATURAL WONDERS INC)

OLD:

LINKDT	LINKENDDT	PERMNO	PERMCO	LINKTYPE	LINKFLAG
19910201	19920513	0	0	NU	XXX
19920514	20040722	77602	11517	LU	BBB

NEW:

LINKDT	LINKENDDT	PERMNO	PERMCO	LINKTYPE	LINKFLAG
19910201	19920513	0	0	NR	XXX
19920514	20001214	77602	11517	LC	BBB
20001215	99999999	0	0	NR	XXX

GVKEY 30245 (LINDAS DIVERSIFD HLDG -CL A)

OLD:

LINKDT	LINKENDDT	PERMNO	PERMCO	LINKTYPE	LINKFLAG
19930101	19940524	0	0	NU	XXX
19940525	20000720	80547	13104	LU	BBB

NEW:

LINKDT	LINKENDDT	PERMNO	PERMCO	LINKTYPE	LINKFLAG
19930101	19940524	0	0	NR	XXX
19940525	19970825	80547	13104	LC	BBB
19970826	99999999	0	0	NR	XXX

GVKEY 63028 (CABLE & CO WORLDWIDE INC)

OLD:

LINKDT	LINKENDDT	PERMNO	PERMCO	LINKTYPE	LINKFLAG
19950101	19960611	0	0	NU	XXX
19960612	19980331	83634	14714	LU	BBB

NEW:

LINKDT	LINKENDDT	PERMNO	PERMCO	LINKTYPE	LINKFLAG
19950101	19960613	0	0	NR	XXX
19960614	19980210	83634	14714	LC	BBB
19980211	99999999	0	0	NR	XXX

GVKEY 66544 (ASSOCIATED MATERIALS LLC)

OLD:

LINKDT	LINKENDDT	PERMNO	PERMCO	LINKTYPE	LINKFLAG
19980226	20020523	85847	15989	LU	BBB

NEW:

LINKDT	LINKENDDT	PERMNO	PERMCO	LINKTYPE	LINKFLAG
19980226	20020419	85847	15989	LC	BBB
20020420	99999999	0	0	NR	XXX

GVKEY 133170 (DR PEPPER SNAPPLE GROUP-SPN)

OLD:

LINKDT	LINKENDDT	PERMNO	PERMCO	LINKTYPE	LINKFLAG
19950101	20000416	0	0	NR	XXX
20000417	99999999	87660	36955	LC	BBB

NEW:

LINKDT	LINKENDDT	PERMNO	PERMCO	LINKTYPE	LINKFLAG
19950101	20000416	0	0	NR	XXX
20000417	20080421	87660	36955	LC	BBB

GVKEY 8687 (POSSIS MEDICAL INC)

OLD:

LINKDT	LINKENDDT	PERMNO	PERMCO	LINKTYPE	LINKFLAG
19700930	19721213	0	0	NU	XXX
19721214	20080403	63686	3637	LU	BBB

NEW:

LINKDT	LINKENDDT	PERMNO	PERMCO	LINKTYPE	LINKFLAG
19700930	19721213	0	0	NR	XXX
19721214	20080402	63686	3637	LC	BBB

GVKEY 5639 (HILL-ROM HOLDINGS INC)

OLD:

LINKDT	LINKENDDT	PERMNO	PERMCO	LINKTYPE	LINKFLAG
19701201	19710627	0	0	NR	XXX
19710628	20080331	52716	20913	LC	BBB
20080401	99999999	92597	52975	LN	BBB

NEW:

LINKDT	LINKENDDT	PERMNO	PERMCO	LINKTYPE	LINKFLAG
19701201	19710627	0	0	NR	XXX
19710628	99999999	52716	20913	LC	BBB

GVKEY 8290 (PACIFICORP)

OLD:

LINKDT	LINKENDDT	PERMNO	PERMCO	LINKTYPE	LINKFLAG
19510101	19660102	0	0	NU	XXX
19660103	20001220	42833	21358	LU	BBB
20001221	99999999	0	0	NU	XXX

NEW:

LINKDT	LINKENDDT	PERMNO	PERMCO	LINKTYPE	LINKFLAG
19510101	19660102	0	0	NR	XXX
19660103	20001220	42833	21358	LC	BBB
20001221	99999999	0	0	NR	XXX

GVKEY 10307 (TTS INC)

OLD:

LINKDT	LINKENDDT	PERMNO	PERMCO	LINKTYPE	LINKFLAG
19680401	19870825	0	0	NU	XXX
19870826	19880919	11633	9453	LU	BBB
19880920	19910630	0	0	NU	XXX

NEW:

LINKDT	LINKENDDT	PERMNO	PERMCO	LINKTYPE	LINKFLAG
19680401	19870825	0	0	NR	XXX
19870826	19880919	11633	9453	LC	BBB
19880920	99999999	0	0	NR	XXX

GVKEY 165743 (STAR BULK CARRIERS CORP)

OLD:

LINKDT	LINKENDDT	PERMNO	PERMCO	LINKTYPE	LINKFLAG
20050101	20060226	0	0	NR	XXX
20060227	20071130	91121	50028	LC	BBB
20071201	20071202	0	0	NU	XXX
20071203	99999999	92470	52888	LC	BBB

NEW:

LINKDT	LINKENDDT	PERMNO	PERMCO	LINKTYPE	LINKFLAG
20050101	20060226	0	0	NR	XXX
20060227	20071130	91121	50028	LC	BBB
20071201	20071202	0	0	NR	XXX
20071203	99999999	92470	52888	LC	BBB

GVKEY 145658 (GALAXY ENERGY CORP)

OLD:

LINKDT	LINKENDDT	PERMNO	PERMCO	LINKTYPE	LINKFLAG
20011201	20051122	0	0	NR	XXX
20051123	99999999	90990	48790	LC	BBB

NEW:

LINKDT	LINKENDDT	PERMNO	PERMCO	LINKTYPE	LINKFLAG
20011201	20051122	0	0	NR	XXX
20051123	20080314	90990	48790	LC	BBB
20080315	99999999	0	0	NR	XXX

GVKEY 162221 (PRB ENERGY INC)

OLD:

LINKDT	LINKENDDT	PERMNO	PERMCO	LINKTYPE	LINKFLAG
20020101	20050411	0	0	NR	XXX
20050412	99999999	90653	46549	LC	BBB

NEW:

LINKDT	LINKENDDT	PERMNO	PERMCO	LINKTYPE	LINKFLAG
20020101	20050411	0	0	NR	XXX
20050412	20080306	90653	46549	LC	BBB
20080307	99999999	0	0	NR	XXX

GVKEY 2597 (CADBURY PLC)

OLD:

LINKDT	LINKENDDT	PERMNO	PERMCO	LINKTYPE	LINKFLAG
19830101	19840910	0	0	NU	XXX
19840911	99999999	20539	7219	LU	BBB

NEW:

LINKDT	LINKENDDT	PERMNO	PERMCO	LINKTYPE	LINKFLAG
19830101	19840910	0	0	NR	XXX
19840911	99999999	20539	7219	LC	BBB

GVKEY 4600 (FEDERAL-MOGUL CORP)

OLD:

LINKDT	LINKENDDT	PERMNO	PERMCO	LINKTYPE	LINKFLAG
19500101	20070418	21338	20694	LU	BBB
20070419	99999999	0	0	NU	XXX

NEW:

LINKDT	LINKENDDT	PERMNO	PERMCO	LINKTYPE	LINKFLAG
19500101	20020425	21338	20694	LC	BBB
20020426	20080422	0	0	NR	XXX
20080423	99999999	92640	20694	LC	BBB

GVKEY 9098 (THOMSON REUTERS PLC)

OLD:

LINKDT	LINKENDDT	PERMNO	PERMCO	LINKTYPE	LINKFLAG
19830101	19840603	0	0	NU	XXX
19840604	99999999	66713	7066	LU	BBB

NEW:

LINKDT	LINKENDDT	PERMNO	PERMCO	LINKTYPE	LINKFLAG
19830101	19840603	0	0	NR	XXX
19840604	99999999	66713	7066	LC	BBB

GVKEY 12304 (TEAMSTAFF INC)

OLD:

LINKDT	LINKENDDT	PERMNO	PERMCO	LINKTYPE	LINKFLAG
19850930	19860514	0	0	NU	XXX
19860515	99999999	10257	8185	LU	BBB

NEW:

LINKDT	LINKENDDT	PERMNO	PERMCO	LINKTYPE	LINKFLAG
19850930	19860514	0	0	NR	XXX
19860515	99999999	10257	8185	LC	BBB

GVKEY 63448 (PURE BIOSCIENCE)

OLD:

LINKDT	LINKENDDT	PERMNO	PERMCO	LINKTYPE	LINKFLAG
19940801	19960807	0	0	NU	XXX
19960808	20070418	83896	14882	LU	BBB
20070419	99999999	0	0	NU	XXX

NEW:

LINKDT	LINKENDDT	PERMNO	PERMCO	LINKTYPE	LINKFLAG
19940801	19960807	0	0	NR	XXX
19960808	20040223	83896	14882	LC	BBB
20040224	20080401	0	0	NR	XXX
20080402	99999999	83896	14882	LC	BBB

GVKEY 66708 (BROADCOM CORP)

OLD:

LINKDT	LINKENDDT	PERMNO	PERMCO	LINKTYPE	LINKFLAG
19980417	99999999	85963	16056	LU	BBB

NEW:

LINKDT	LINKENDDT	PERMNO	PERMCO	LINKTYPE	LINKFLAG
19980417	99999999	85963	16056	LC	BBB

GVKEY 65484 (WALKING CO HOLDINGS INC)

OLD:

LINKDT	LINKENDDT	PERMNO	PERMCO	LINKTYPE	LINKFLAG
19970926	99999999	85356	15720	LU	BBB

NEW:

LINKDT	LINKENDDT	PERMNO	PERMCO	LINKTYPE	LINKFLAG
19970926	99999999	85356	15720	LC	BBB

GVKEY 64480 (MACROVISION SOLUTIONS CORP)

OLD:

LINKDT	LINKENDDT	PERMNO	PERMCO	LINKTYPE	LINKFLAG
19950101	19970312	0	0	NU	XXX
19970313	99999999	84624	15384	LU	BBB

NEW:

LINKDT	LINKENDDT	PERMNO	PERMCO	LINKTYPE	LINKFLAG
19950101	19970312	0	0	NR	XXX
19970313	99999999	84624	15384	LC	BBB

GVKEY 64307 (CAREDATA.COM INC)

OLD:

LINKDT	LINKENDDT	PERMNO	PERMCO	LINKTYPE	LINKFLAG
19950101	19970128	0	0	NU	XXX
19970129	20010920	84427	15290	LU	BBB

NEW:

LINKDT	LINKENDDT	PERMNO	PERMCO	LINKTYPE	LINKFLAG
19950101	19970128	0	0	NR	XXX
19970129	20001031	84427	15290	LC	BBB
20001101	99999999	0	0	NR	XXX

GVKEY 63059 (AMS HEALTH SCIENCES INC)

OLD:

LINKDT	LINKENDDT	PERMNO	PERMCO	LINKTYPE	LINKFLAG
19971106	99999999	85523	15809	LU	BBB

NEW:

LINKDT	LINKENDDT	PERMNO	PERMCO	LINKTYPE	LINKFLAG
19971106	20070918	85523	15809	LC	BBB
20070919	99999999	0	0	NR	XXX

GVKEY 25033 (NORTH AMERICAN SCIENTIFIC)

OLD:

LINKDT	LINKENDDT	PERMNO	PERMCO	LINKTYPE	LINKFLAG
19980212	99999999	85837	15964	LU	BBB

NEW:

LINKDT	LINKENDDT	PERMNO	PERMCO	LINKTYPE	LINKFLAG
19980212	99999999	85837	15964	LC	BBB

GVKEY 16974 (INDIANA COMMUNITY BANCORP)

OLD:

LINKDT	LINKENDDT	PERMNO	PERMCO	LINKTYPE	LINKFLAG
19870701	19880113	0	0	NU	XXX
19880114	99999999	11866	9652	LU	BBB

NEW:

LINKDT	LINKENDDT	PERMNO	PERMCO	LINKTYPE	LINKFLAG
19870701	19880113	0	0	NR	XXX
19880114	99999999	11866	9652	LC	BBB

GVKEY 13863 (CONSOL GOLDEN QUAIL RES LTD)

OLD:

LINKDT	LINKENDDT	PERMNO	PERMCO	LINKTYPE	LINKFLAG
19860131	19870405	0	0	NU	XXX
19870406	20000720	78630	26188	LU	BBB

NEW:

LINKDT	LINKENDDT	PERMNO	PERMCO	LINKTYPE	LINKFLAG
19860131	19870405	0	0	NR	XXX
19870406	19990217	78630	26188	LC	BBB
19990218	99999999	0	0	NR	XXX

GVKEY 15822 (NEW HORIZONS WORLDWIDE INC)

OLD:

LINKDT	LINKENDDT	PERMNO	PERMCO	LINKTYPE	LINKFLAG
19880101	19890628	0	0	NU	XXX
19890629	20061019	75609	10232	LU	BBB

NEW:

LINKDT	LINKENDDT	PERMNO	PERMCO	LINKTYPE	LINKFLAG
19880101	19890628	0	0	NR	XXX
19890629	20050721	75609	10232	LC	BBB
20050722	20070418	0	0	NR	XXX

GVKEY 8859 (QUANEX CORP)

OLD:

LINKDT	LINKENDDT	PERMNO	PERMCO	LINKTYPE	LINKFLAG
19591101	19650801	0	0	NU	XXX
19650802	99999999	42307	21472	LU	BBB

NEW:

LINKDT	LINKENDDT	PERMNO	PERMCO	LINKTYPE	LINKFLAG
19591101	19650801	0	0	NR	XXX
19650802	20080423	42307	21472	LC	BBB

DATA INSTALLATION

Instructions and screen shots for installation are written for Windows. Differences related to Linux and Sun arenoted.

WINDOWS:

To install data, insert your CD into the drive and from the Start Menu, select Run `d:\setupwin32.exe`. Click OK.

SUN SOLARIS:

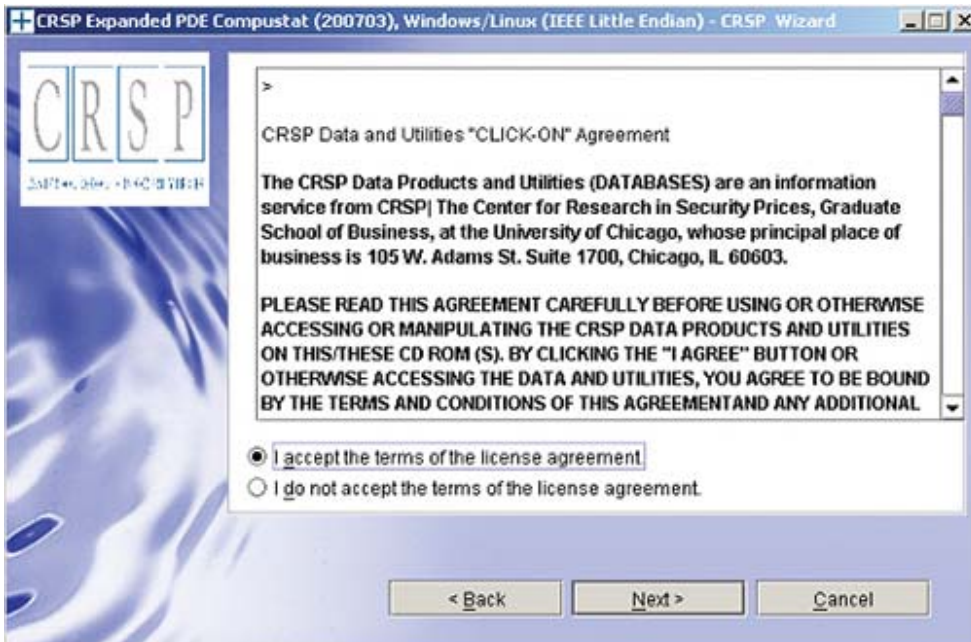
After inserting the CD, a terminal will open with the file, `setupsolaris.bin`. Double click on this setup file to begin the installation process.

LINUX:

Upon insertion of the CD, a terminal will open with the file, `setuplinux.bin`. Double click on this setup file and open a terminal to begin the installation process.



After you have clicked **Next** on the Welcome screen, scroll through and read the CRSP Data and Utilities Agreement. Click to accept the terms of the license agreement, and assuming you do, click **Next**.

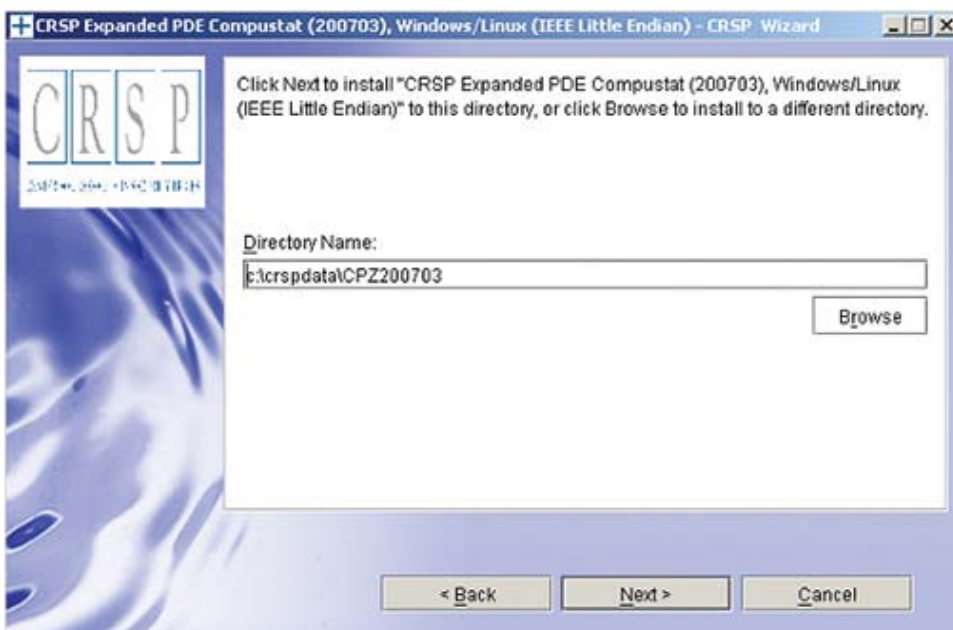


WINDOWS:

The default directory for the data installation is `c:\crspdata\cczyyyymm`. You may accept or modify it. Click **Next**. **Note:** InstallShield does not verify available space. Please see the database parameters on page 1 for space required for installation.

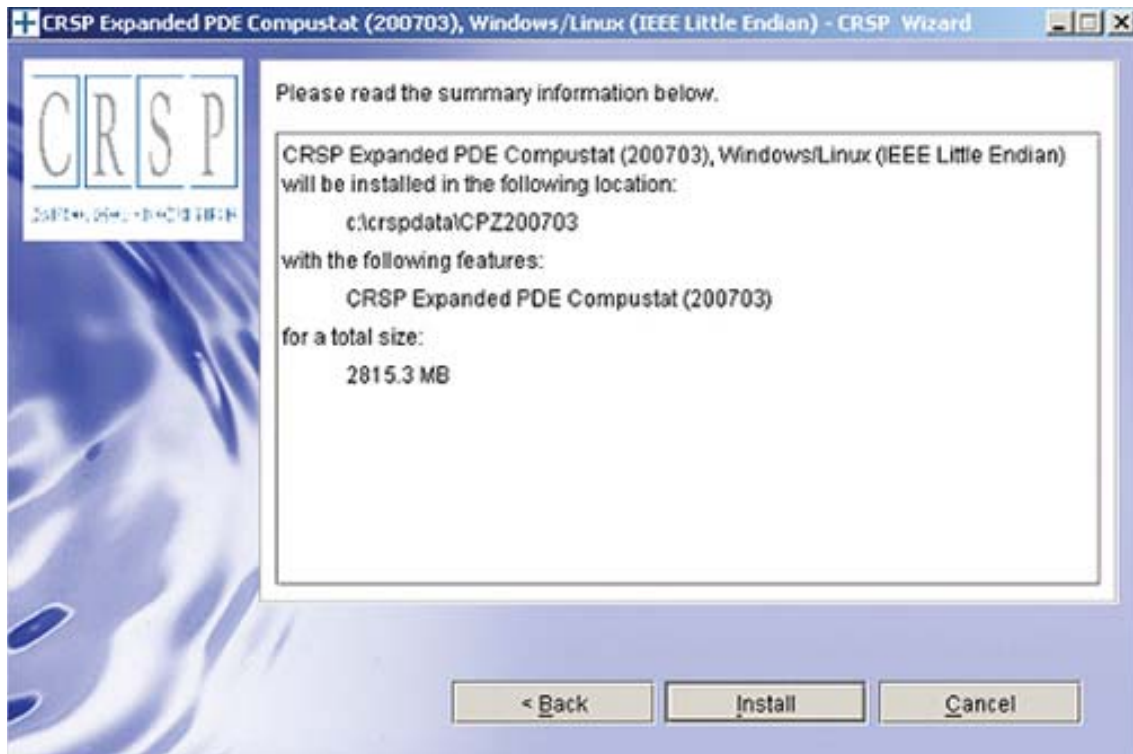
SUN SOLARIS & LINUX:

The default directory for the data installation is `/crspdata`. You must have write permission to the directory you specify, for example, `/home/username/crspdata`. **Note:** InstallShield does not verify available space. Please see the database parameters on page 1 for space required for installation.



Summary information is displayed: Location, data components and the amount of space that is required for

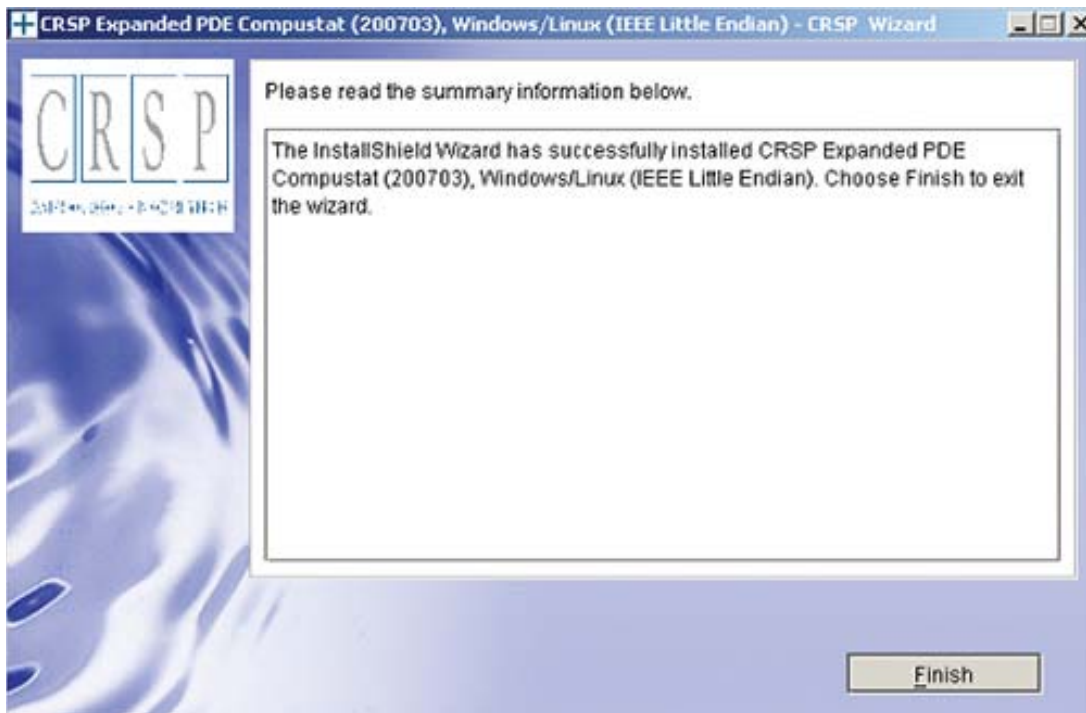
the data. Click on **Install** to proceed.



The screen will display the status of your installation.



A message indicating the success of the installation appears when the process is complete. Click **Finish**.



SUN SOLARIS & LINUX:

After clicking Finish, a file named `crsp.kshrc` must be run to set the local environment variable for the database. At the prompt, type:

```
>. ./crsp.kshrc <enter>
```

Note: If you are not using `ksh`, modifications will be necessary. Check with your Unix administrator.

WINDOWS:

Location of the software and data may be checked by opening **CRSP Client Environment** from the CRSPAccess menu. This new utility provides users a quick and simple way of both checking and switching environment variables if necessary. Where, in the past, users had to go through the Control Panel to manipulate the environment variables, this can now be done by quick editing of the Client Environment screen.

The screenshot shows a window titled "CRSPAccess Client Environment" with a standard Windows title bar. The window contains five sections, each with a title and a description, followed by a text input field and a "Browse" button:

- CRSP Root**
CRSP Root Directory
This folder/directory contains the CRSP root subfolders that will allow the CRSP utilities to function properly.
Input field: N:\crsproot294\
- CRSP Monthly Stock**
CRSP Monthly Stock Database Directory
Input field: c:\crspdata\MIZ200611\
- CRSP Daily Stock**
CRSP Daily Stock Database Directory
Input field: c:\crspdata\DIZ200611\
- CRSP Work**
CRSP Work Directory
This folder/directory is used for storage of temporary files, log files and contains subfolders that may hold user created files
Input field: C:\CRSP\work\
- CRSP CompuStat CCM**
CRSP CompuStat Merged Database Directory
Input field: c:\crspdata\CPZ200703\

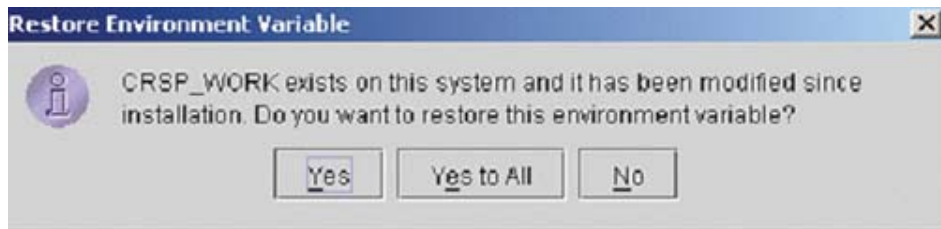
At the bottom of the window, there are three buttons: "Do", "Remove", and "Exit".

UNINSTALL

For each data install, an uninstall is created on the CRSPAccess menu. Data uninstalls do not touch software. Likewise, software uninstalls do not touch data. Each uninstall is done separately. As with the install, the uninstall is wizard-driven. When installation of either software or data is complete, users may be prompted with an option to either reboot the computer or wait until later.

Uninstall & CRSP Client Environment

Each time a path is modified in client environment, the action is recorded. Upon running `uninstall`, a *Restore Environment Variable* prompt will appear:



This prompt appears for each variable for each modification. Answer each prompt and continue cycling through. **Yes** is the default, which will restore environment variables back to what they were prior to the install.