

CRSP/COMPUSTAT MERGED DATABASE RELEASE NOTES

JULY 2008 MONTHLY UPDATE

INTRODUCTION

These release notes accompany the July 2008 monthly cut of the CRSP/Compustat Merged Database (CCM). The CCM files are updated monthly based on Compustat's final research cuts and shipped monthly, quarterly or annually. Files are delivered on a single compressed CD-ROM and installed using an InstallShield wizard. Please refer to our website for CRSPAccess Release Notes for full product information and for Documents and Guides for all CRSP products at:

<http://www.crsp.chicagogsb.edu/support/documentation>

NEW CCM DATABASE TO SHIP IN NOVEMBER

In November, CRSP will ship the CRSP/Compustat database in the new CCM format that contains many additional items available through Compustat's Xpressfeed format. Quarterly and monthly subscribers will get two cuts of the October 2008 cut database, one in the old CST format and a second in the new CCM format. CRSPSift for Windows and CRSPAccess versions will also be shipped that will include new utilities to support the new CCM database.

UPCOMING BANK FILE CHANGE

Effective August 31, 2008, Compustat will no longer produce the FTP Bank files and will provide bank data only through its Xpressfeed delivery. CRSP will include the FTP Bank files in the current CST format database for as long as they are available. The new Xpressfeed bank data will only be available in the new CCM format database that we expect to ship in September.

ABOUT THE JULY 2008

CRSP/COMPUSTAT MERGED DATABASE:

The Compustat cut date for this release is July 12, 2008. The database is shipped in its entirety with historical edits for restatements and corrections for each release.

The CD label for the CCM database is CPZ.

CPZ: CRSP Stock and Indices with Compustat data. PDE market data is for listed and research companies.

The database is delivered and supported on three platforms: Windows, Linux and Solaris. It has been tested on CRSPAccess 2.97 and is supported on CRSPAccess versions 2.91 and higher.

PARAMETERS:

- The number of CRSP Securities in the CPZ database is 23,929.
- The number of GVKEYs in the CPZ database is 33,440.
- The number of links in the CPZ database is 55,443.
- Database size is approximately 2.35 Gb.

CALENDARS

The CCM database utilizes the CRSP stock calendars to align properly with CRSP data. Data in the CRSP daily Stock (and Indices) file use daily and annual calendars.

Data in the monthly files use monthly, quarterly and annual calendars.

Calendar	Date Range	Date Index Range
Daily trading calendar	19251231-20080711	1-21905
Month-end trading calendar	19251231-20091231	1-1045
Year-end trading calendar	19251231-20091231	1-85
Quarter-end trading calendar	19251231-20091231	1-337
Weekly trading calendar	19260102-20080711	1-4306



CENTER FOR RESEARCH IN SECURITY PRICES

A Research Center at ChicagoGSB

DATA EDITS

GVKEY 158053 (NEW YORK MORTGAGE TRUST INC)

OLD:

LINKDT	LINKENDDT	PERMNO	PERMCO	LINKTYPE	LINKFLAG
19990101	20040623	0	0	NR	XXX
20040624	20070910	90214	45287	LC	BBB
20070911	99999999	0	0	NR	XXX

NEW:

LINKDT	LINKENDDT	PERMNO	PERMCO	LINKTYPE	LINKFLAG
19990101	20040623	0	0	NR	XXX
20040624	20070910	90214	45287	LC	BBB
20070911	20080604	0	0	NR	XXX
20080605	99999999	90214	45287	LC	BBB

GVKEY 6081 (NAVISTAR INTERNATIONAL CORP)

OLD:

LINKDT	LINKENDDT	PERMNO	PERMCO	LINKTYPE	LINKFLAG
19491101	20070418	12503	21265	LU	BBB
20070419	99999999	0	0	NU	XXX

NEW:

LINKDT	LINKENDDT	PERMNO	PERMCO	LINKTYPE	LINKFLAG
19491101	20070213	12503	21265	LC	BBB
20070214	20080629	0	0	NR	XXX
20080630	99999999	12503	21265	LC	BBB

GVKEY 145416 (SERACARE LIFE SCIENCES INC)

OLD:

LINKDT	LINKENDDT	PERMNO	PERMCO	LINKTYPE	LINKFLAG
19970301	20020218	0	0	NR	XXX
20020219	20060314	89312	42787	LC	BBB
20060315	99999999	0	0	NR	XXX

NEW:

LINKDT	LINKENDDT	PERMNO	PERMCO	LINKTYPE	LINKFLAG
19970301	20020218	0	0	NR	XXX
20020219	20060314	89312	42787	LC	BBB
20060315	20080622	0	0	NR	XXX
20080623	99999999	89312	42787	LC	BBB

GVKEY 180181 (TELMEX INTERNACIONAL SAB DE)

OLD:

LINKDT	LINKENDDT	PERMNO	PERMCO	LINKTYPE	LINKFLAG
20080614	99999999	0	0	NR	XXX

NEW:

LINKDT	LINKENDDT	PERMNO	PERMCO	LINKTYPE	LINKFLAG
20080611	99999999	92710	53040	LC	BBB

GVKEY 19625 (TELMEX-TELEFONOS DE MEXICO)

OLD:

LINKDT	LINKENDDT	PERMNO	PERMCO	LINKTYPE	LINKFLAG
19900101	19910513	0	0	NU	XXX
19910514	99999999	76636	4428	LU	BBB

NEW:

LINKDT	LINKENDDT	PERMNO	PERMCO	LINKTYPE	LINKFLAG
19900101	19910513	0	0	NR	XXX
19910514	99999999	76636	4428	LC	BBB

GVKEY 1567 (TRANE INC)

OLD:

LINKDT	LINKENDDT	PERMNO	PERMCO	LINKTYPE	LINKFLAG
19500101	19880701	10372	22187	LC	BBB
19880702	19950202	0	0	NR	XXX
19950203	20080606	81285	30847	LC	BBB

NEW:

LINKDT	LINKENDDT	PERMNO	PERMCO	LINKTYPE	LINKFLAG
19500101	19880701	10372	22187	LC	BBB
19880702	19950202	0	0	NR	XXX
19950203	20080605	81285	30847	LC	BBB

GVKEY 5959 (INGERSOLL-RAND CO LTD)

OLD:

LINKDT	LINKENDDT	PERMNO	PERMCO	LINKTYPE	LINKFLAG
19500101	99999999	12431	20977	LU	BBB

NEW:

LINKDT	LINKENDDT	PERMNO	PERMCO	LINKTYPE	LINKFLAG
19500101	99999999	12431	20977	LC	BBB

GVKEY 29492 (COMMERCE GROUP INC/MA)

OLD:

LINKDT	LINKENDT	PERMNO	PERMCO	LINKTYPE	LINKFLAG
19900101	19931227	0	0	NU	XXX
19931228	20080605	79956	12733	LU	BBB

NEW:

LINKDT	LINKENDT	PERMNO	PERMCO	LINKTYPE	LINKFLAG
19900101	19931227	0	0	NR	XXX
19931228	20080604	79956	12733	LC	BBB

GVKEY 11818 (BEAR STEARNS COMPANIES INC)

OLD:

LINKDT	LINKENDT	PERMNO	PERMCO	LINKTYPE	LINKFLAG
19840501	19851028	0	0	NU	XXX
19851029	20080602	68304	20282	LU	BBB

NEW:

LINKDT	LINKENDT	PERMNO	PERMCO	LINKTYPE	LINKFLAG
19840501	19851028	0	0	NR	XXX
19851029	20080530	68304	20282	LC	BBB

GVKEY 1491 (AMERICAN ISRAELI PAPER MILLS)

OLD:

LINKDT	LINKENDT	PERMNO	PERMCO	LINKTYPE	LINKFLAG
19600401	19620701	0	0	NU	XXX
19620702	99999999	29014	20089	LU	BBB

NEW:

LINKDT	LINKENDT	PERMNO	PERMCO	LINKTYPE	LINKFLAG
19600401	19620701	0	0	NR	XXX
19620702	99999999	29014	20089	LC	BBB

GVKEY 2521 (REUNION INDUSTRIES INC)

OLD:

LINKDT	LINKENDT	PERMNO	PERMCO	LINKTYPE	LINKFLAG
19630101	19931028	0	0	NU	XXX
19931029	99999999	79732	12517	LU	BBB

NEW:

LINKDT	LINKENDT	PERMNO	PERMCO	LINKTYPE	LINKFLAG
19630101	19931028	0	0	NR	XXX
19931029	20070413	79732	12517	LC	BBB
20070414	99999999	0	0	NR	XXX

GVKEY 8979 (REAL ESTATE INVEST/CA)

OLD:

LINKDT	LINKENDDT	PERMNO	PERMCO	LINKTYPE	LINKFLAG
19820101	19840822	0	0	NU	XXX
19840823	19951231	65905	7196	LU	BBB

NEW:

LINKDT	LINKENDDT	PERMNO	PERMCO	LINKTYPE	LINKFLAG
19820101	19840822	0	0	NR	XXX
19840823	19960315	65905	7196	LC	BBB
19960316	99999999	0	0	NR	XXX

GVKEY 9398 (WALL STREET DELI INC)

OLD:

LINKDT	LINKENDDT	PERMNO	PERMCO	LINKTYPE	LINKFLAG
19810701	19820927	0	0	NU	XXX
19820928	20030424	68743	5633	LU	BBB

NEW:

LINKDT	LINKENDDT	PERMNO	PERMCO	LINKTYPE	LINKFLAG
19810701	19820927	0	0	NR	XXX
19820928	20010129	68743	5633	LC	BBB
20010130	99999999	0	0	NR	XXX

GVKEY 13238 (QUADLOGIC CONTROLS CORP)

OLD:

LINKDT	LINKENDDT	PERMNO	PERMCO	LINKTYPE	LINKFLAG
19840301	19870916	0	0	NU	XXX
19870917	19890831	11688	9113	LU	BBB

NEW:

LINKDT	LINKENDDT	PERMNO	PERMCO	LINKTYPE	LINKFLAG
19840301	19870916	0	0	NR	XXX
19870917	19900110	11688	9113	LC	BBB
19900111	99999999	0	0	NR	XXX

GVKEY 14365 (MILLENNIA INC)

OLD:

LINKDT	LINKENDDT	PERMNO	PERMCO	LINKTYPE	LINKFLAG
19850701	19880428	0	0	NU	XXX
19880429	19980331	11934	9382	LU	BBB

NEW:

LINKDT	LINKENDDT	PERMNO	PERMCO	LINKTYPE	LINKFLAG
19850701	19880428	0	0	NR	XXX
19880429	19980612	11934	9382	LC	BBB
19980613	99999999	0	0	NR	XXX

GVKEY 15659 (TOKIO MARINE HOLDINGS INC)

OLD:

LINKDT	LINKENDDT	PERMNO	PERMCO	LINKTYPE	LINKFLAG
19820401	99999999	76428	4466	LU	BBB

NEW:

LINKDT	LINKENDDT	PERMNO	PERMCO	LINKTYPE	LINKFLAG
19820401	20070725	76428	4466	LC	BBB
20070726	99999999	0	0	NR	XXX

GVKEY 16878 (FREMONT GENERAL CORP)

OLD:

LINKDT	LINKENDDT	PERMNO	PERMCO	LINKTYPE	LINKFLAG
19830101	99999999	37699	1830	LU	BBB

NEW:

LINKDT	LINKENDDT	PERMNO	PERMCO	LINKTYPE	LINKFLAG
19830101	20080416	37699	1830	LC	BBB
20080417	99999999	0	0	NR	XXX

GVKEY 61192 (CRAFT BREWERS ALLIANCE INC)

OLD:

LINKDT	LINKENDDT	PERMNO	PERMCO	LINKTYPE	LINKFLAG
19940101	19950816	0	0	NU	XXX
19950817	99999999	82176	13945	LU	BBB

NEW:

LINKDT	LINKENDDT	PERMNO	PERMCO	LINKTYPE	LINKFLAG
19940101	19950816	0	0	NR	XXX
19950817	99999999	82176	13945	LC	BBB

GVKEY 64020 (VU1 CORP)

OLD:

LINKDT	LINKENDDT	PERMNO	PERMCO	LINKTYPE	LINKFLAG
19920101	19961120	0	0	NU	XXX
19961121	19980122	84270	15166	LU	BBB
19980123	20040923	0	0	NU	XXX

NEW:

LINKDT	LINKENDDT	PERMNO	PERMCO	LINKTYPE	LINKFLAG
19920101	19961120	0	0	NR	XXX
19961121	19980122	84270	15166	LC	BBB
19980123	99999999	0	0	NR	XXX

DATA INSTALLATION

Instructions and screen shots for installation are written for Windows. Differences related to Linux and Sun arenoted.

WINDOWS:

To install data, insert your CD into the drive and from the Start Menu, select Run `d:\setupwin32.exe`. Click OK.

SUN SOLARIS:

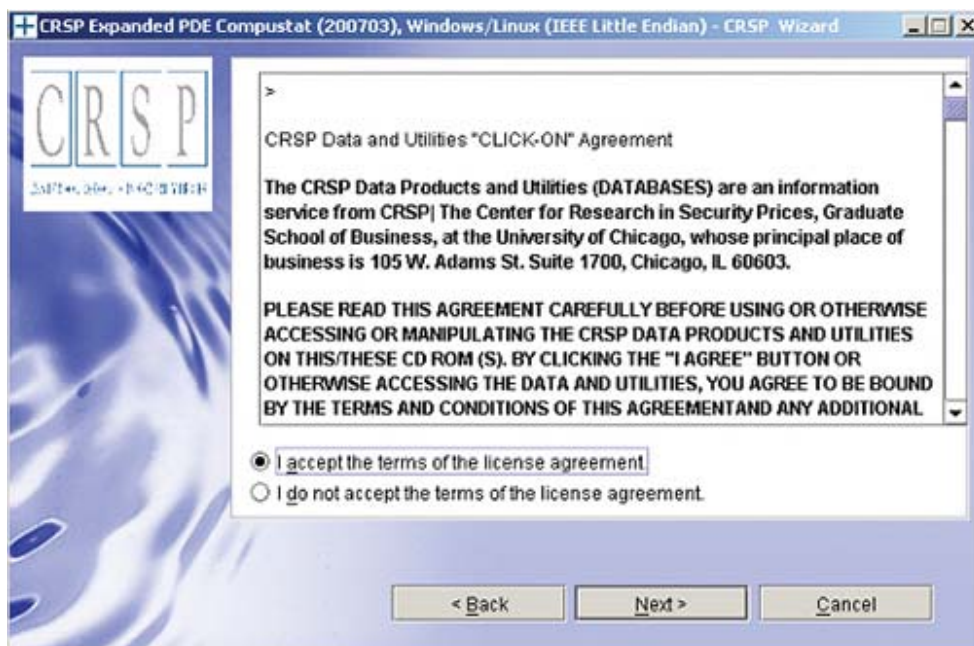
After inserting the CD, a terminal will open with the file, `setupsolaris.bin`. Double click on this setup file to begin the installation process.

LINUX:

Upon insertion of the CD, a terminal will open with the file, `setuplinux.bin`. Double click on this setup file and open a terminal to begin the installation process.



After you have clicked **Next** on the Welcome screen, scroll through and read the CRSP Data and Utilities Agreement. Click to accept the terms of the license agreement, and assuming you do, click **Next**.

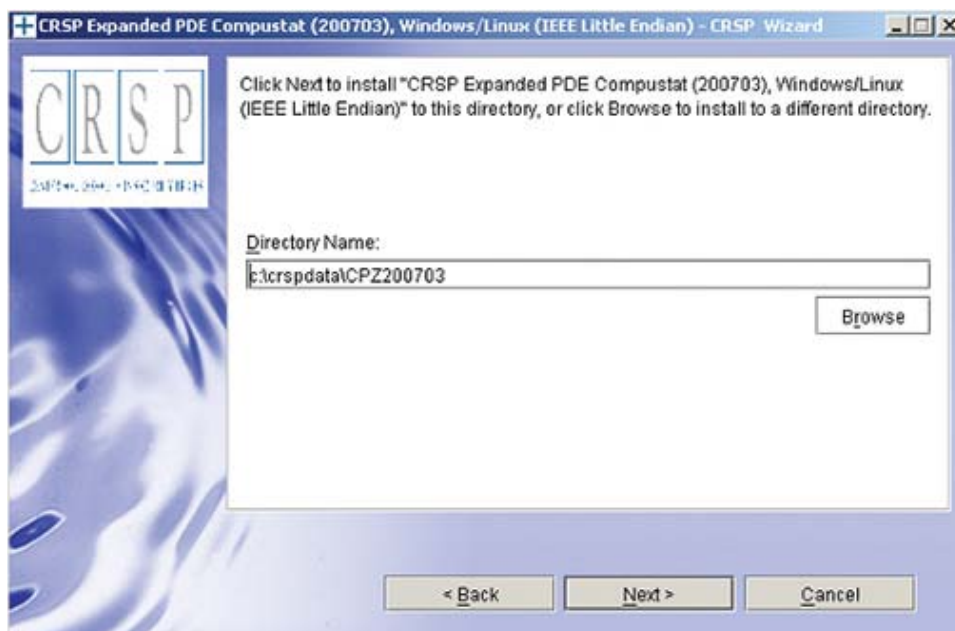


WINDOWS:

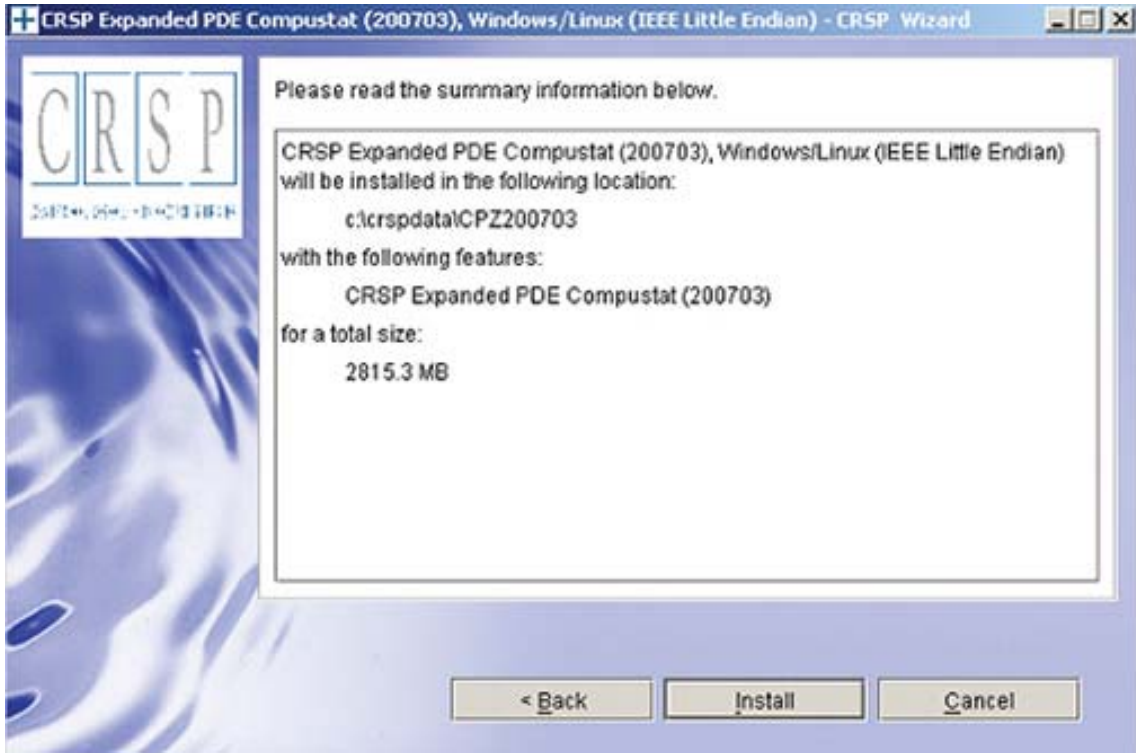
The default directory for the data installation is `c:\crspdata\cczyyyymm`. You may accept or modify it. Click **Next**. **Note:** InstallShield does not verify available space. Please see the database parameters on page 1 for space required for installation.

SUN SOLARIS & LINUX:

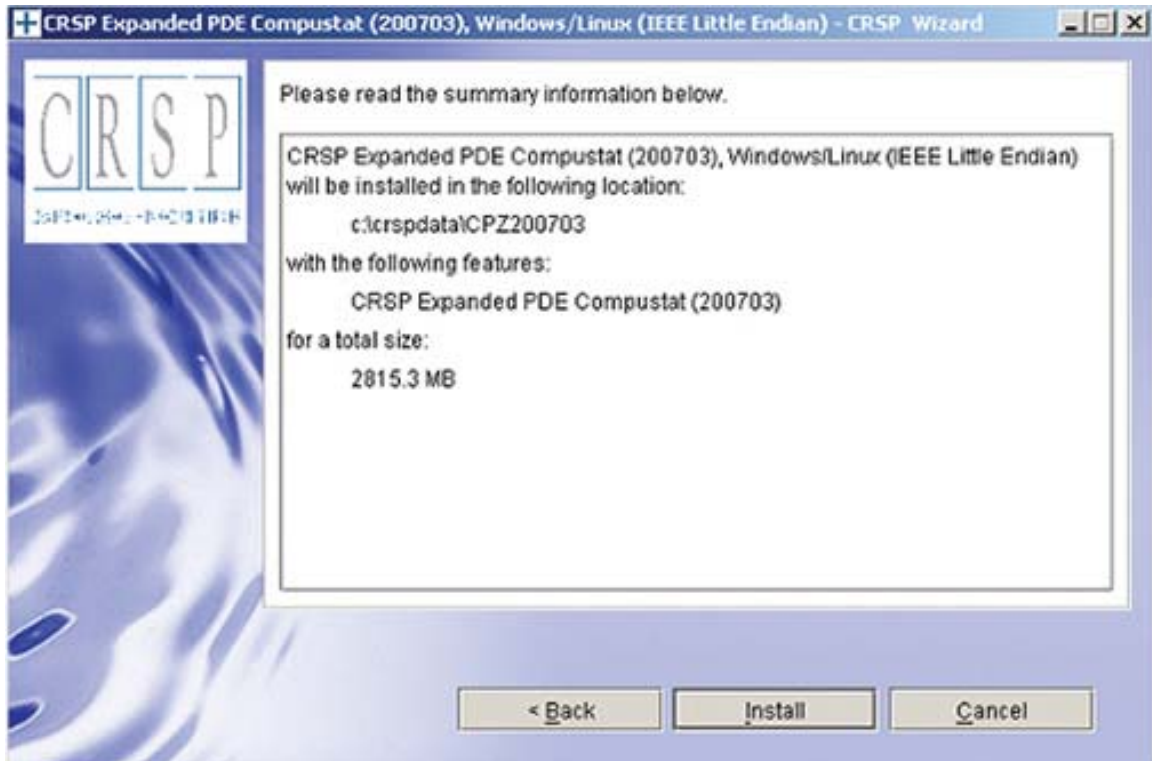
The default directory for the data installation is `/crspdata`. You must have write permission to the directory you specify, for example, `/home/username/crspdata`. **Note:** InstallShield does not verify available space. Please see the database parameters on page 1 for space required for installation.



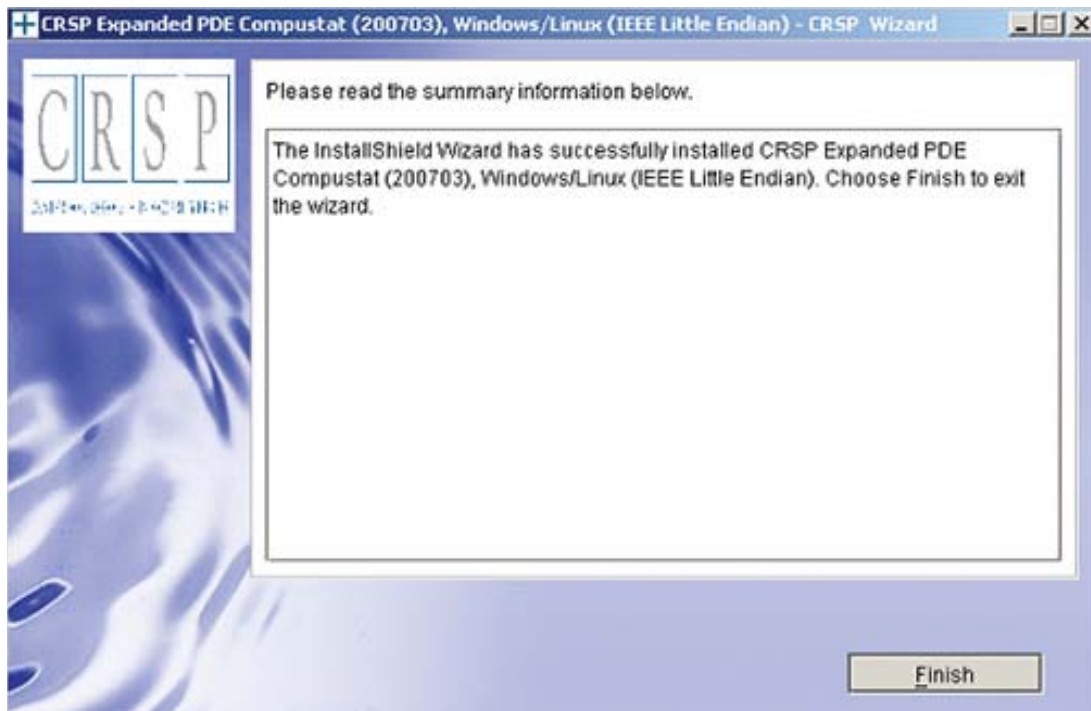
Summary information is displayed: Location, data components and the amount of space that is required for the data. Click on **Install** to proceed.



The screen will display the status of your installation.



A message indicating the success of the installation appears when the process is complete. Click **Finish**.



SUN SOLARIS & LINUX:

After clicking Finish, a file named `crsp.kshrc` must be run to set the local environment variable for the database. At the prompt, type:

```
> . ./crsp.kshrc <enter>
```

Note: If you are not using `ksh`, modifications will be necessary. Check with your Unix administrator.

WINDOWS:

Location of the software and data may be checked by opening **CRSP Client Environment** from the CRSPAccess menu. This new utility provides users a quick and simple way of both checking and switching environment variables if necessary. Where, in the past, users had to go through the Control Panel to manipulate the environment variables, this can now be done by quick editing of the Client Environment screen.

CRSPAccess Client Environment

CRSP Root
CRSP Root Directory
This folder/directory contains the CRSP root subfolders that will allow the CRSP utilities to function properly.

N:\crsroot294\

CRSP Monthly Stock
CRSP Monthly Stock Database Directory

c:\crspdta\MIZ200611\

CRSP Daily Stock
CRSP Daily Stock Database Directory

c:\crspdta\DIZ200611\

CRSP Work
CRSP Work Directory
This folder/directory is used for storage of temporary files, log files and contains subfolders that may hold user created files

C:\CRSP\work\

CRSP Compustat CCM
CRSP Compustat Merged Database Directory

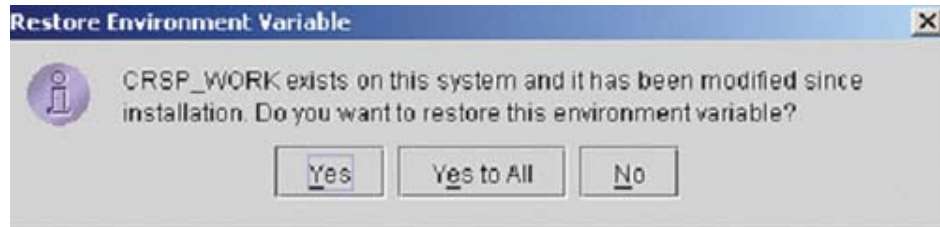
c:\crspdta\CPZ200703\

UNINSTALL

For each data install, an uninstall is created on the CRSPAccess menu. Data uninstalls do not touch software. Likewise, software uninstalls do not touch data. Each uninstall is done separately. As with the install, the uninstall is wizard-driven. When installation of either software or data is complete, users may be prompted with an option to either reboot the computer or wait until later.

Uninstall & CRSP Client Environment

Each time a path is modified in client environment, the action is recorded. Upon running `uninstall`, a *Restore Environment Variable* prompt will appear:



This prompt appears for each variable for each modification. Answer each prompt and continue cycling through. Yes is the default, which will restore environment variables back to what they were prior to the install.