

These release notes pertain to the September 2009 Monthly release of the CRSP US Stock and Indices databases.

This shipment of data utilizes the InstallShield® wizard. Because the data are compressed, data files are not accessible without first installing through the wizard. This applies to all CRSP data and software products. InstallShield® works for all three platforms: Windows, Linux, and Sun Solaris.

SEPTEMBER 2009 DATA EDITS

GROUP EDITS

BEGIN DATE	END DATE	DESCRIPTION
19950920	20090830	Reviewed all PERMNOs that had any trading over the last 10 years with sharecode 12 (ordinary common shares incorporated outside of the US). 25 PERMNOs were found that had US incorporation. Changed sharecode from 12 to 11 (ordinary common shares for securities that need not be further defined) for those PERMNOs.
19721214	19811023	Reviewed cases where shares outstanding was equal to zero. 152 PERMNOs had shares values added to their trading history (mostly from the early 70s).

INDIVIDUAL EDITS

PERMNO	COMPANY NAME	BEGIN DATE	END DATE	DESCRIPTION
87831	A T & T CORP	20010709	20010709	Changed dividend amount to 16.56 from 18.70312, acperm to 89001 from 10401, & accomp to 41670 from 20103 for final distribution with distribution code of 3783 and ex-date of 20010709
83128	CYBERCASH INC	20010301	20010301	Added next date of 20010301 and delist price of 0.08 to the delisting array
92925	E G A EMERGING GLOBAL SHARES TR			Changed name to E G A EMERGING GLOBAL SHARES TR from E G A EMERGING GLOBAL SHARES for entire history.
92926	E G A EMERGING GLOBAL SHARES TR			Changed name to E G A EMERGING GLOBAL SHARES TR from E G A EMERGING GLOBAL SHARES for entire history.
92973	E G A EMERGING GLOBAL SHARES TR			Changed name to E G A EMERGING GLOBAL SHARES TR from E G A EMERGING GLOBAL SHARES for entire history.
88817	ENERGY PARTNERS LTD	20090330	20090922	Added zero nameline for the period 20090330-20090922 to reflect off exchange trading.
88872	EUROPE 2001 HOLDRS TR	20020809	20020809	Changed distribution code to 4533 from 3753, dividend amount to 0.0208 from 0.1024, & acperm to 95483 from 33452 for distribution with ex-date of 20020809
81211	HORIZON FINANCIAL SERVICES CORP	20001124	20001124	Changed next date to 20001127 from 2001208 and delist price to -5.50 from 6.062 in the delisting array
92949	I E S I BFC LTD	20090626	20090626	Changed distribution codes from 1232 to 1332 for both distributions on ex-date 6/26/09.
86974	I X L ENTERPRISES INC	20011108	20011108	Changed acperm to 89212 from 86928 and accomp to 42397 from 16531 for final distribution with distribution code 3723 and ex-date 20011108
43175	INSTITUTE BROADCAST ARTS INC			Changed name to INSTITUTE BROADCAST ARTS INC from INSITUTE BROADCAST ARTS INC for entire history.

PERMNO	COMPANY NAME	BEGIN DATE	END DATE	DESCRIPTION
88488	MARKET 2000 HOLDRS TR	20020809	20020809	Changed distribution code to 4533 from 3753, dividend amount to 0.0117 from 0.0576, & acperm to 95483 from 33452 for distribution with ex-date of 20020809 & pay date of 20020815
81731	N S & L BANCORP INC	20010221	20010221	Added next date of 20010223 and delist price of 10.625 to the delisting array
87080	NETIA HOLDINGS S A	20021014	20021014	Added next date of 20021015 and delist price of 1.51 to the delisting array
76710	OSTEOTECH INC	19910621	19910716	Removed all data from 19910621-19910716
92017	R M R ASIA REAL ESTATE FUND	20090617	20090617	Changed facprc & facshr to -1 from 0 & 0.513, respectively, and changed accomp to 53174 from 52275 for delisting distribution with distribution code of 3723 on ex-date of 20090617
47546	REVENUE PROPERTIES LTD	20001229	20001229	Changed next date to 20010308 from 20010102 and delist price to 1.36 from 1.541 in the delisting array
86928	SCIENT CORP	20011108	20011108	Changed acperm to 89212 from 86974 and accomp to 42397 from 16557 for final distribution with distribution code 3723 and ex-date 20011108
92893	SILVERCORP METALS INC	20090327	20090626	Changed distribution codes from 1232 to 1332 on ex-dates 3/27/09 and 6/26/09.
92999	STARWOOD PROPERTY TRUST INC			Changed sharecode from 11 to 18 to signify REIT status throughout entire history.
77200	TRANSFINANCIAL HOLDINGS INC	20020429	20020429	Added next date of 20020502 and delist price of 2.50 to the delisting array
88317	UTILITIES HOLDRS TRUST	20090826	20090826	Added two distributions with distribution codes of 1212 and pay dates of 20090917 & 20090923, respectively, on ex-date 20090826
88827	WIRELESS HOLDERS TRUST	20020809	20020809	Changed distribution code to 4533 from 3753, dividend amount to 0.0962 from 0.4736, acperm to 95483 from 33452, & accomp to 1577 from 11577 for distribution with ex-date of 20020809

FILE VERSION SPECIFICS

This table contains version specific information for the CRSP Stock Files with data ending September 2009. It contains the number of securities and information about the maximums of the event arrays.

FILE CODE	# OF SECURITIES	MAX NAMES	MAX DIST	MAX SHARES	MAX DELISTS	MAX GROUPS	MAX NASDIN	FIRST PERMNO	LAST PERMNO
DAZ	28103	39	1105	608	1	4	2116	10000	93324
MAZ	28073	39	1105	608	1	4	2116	10000	93324

CALENDAR	DATE RANGE	DATE INDEX RANGE
Daily trading calendar	19251231-20090930	1-22213
Month-end trading calendar	19251231-20090930	1-1006
Year-end trading calendar	19251231-20101231	1-86
Quarter-end trading calendar	19251231-20101231	1-341
Weekly trading calendar	19260102-20090930	1-4370

CRSPACCESS PRODUCT INFORMATION

To simplify installation for our subscribers, data are bundled into product groups. Information relevant to each product group is listed.

PRODUCT NAME	DATABASE	MEDIA	SIZE	INDICES	PORTFOLIOS	COMPONENTS & DESCRIPTION
CRSP 1925 US Stock with Indices	FIZyyyyymm	DVD	3.5 GB	All CRSP indices and portfolio assignments	All portfolios	DI - 1925 Daily US Stock & Indices MI - 1925 Monthly US Stock & Indices IF - CRSP Supplemental US Indices
CRSP 1925 US Stock	FAZyyyyymm	DVD	3.1 GB	CRSP NYSE/ AMEX/ NASDAQ Value-weighted Market, CRSP NYSE/ AMEX/ NASDAQ Equal-weighted Market, S&P 500 Composite, NASDAQ Composite	NYSE/ AMEX/ NASDAQ Capitalization Deciles	DA - 1925 Daily US Stock MA - 1925 Monthly US Stock IN - CRSP Limited US Indices
CRSP 1962 US Stock	A6Zyyyyymm	DVD	2.7 GB	CRSP NYSE/ AMEX/ NASDAQ Value-weighted Market, CRSP NYSE/ AMEX/ NASDAQ Equal-weighted Market, S&P 500 Composite, NASDAQ Composite	NYSE/ AMEX/ NASDAQ Capitalization Deciles	D6 - 1962 Daily US Stock M6 - 1962 Monthly US Stock IN - CRSP Limited US Indices
CRSP 1962 US Stock with Indices	AXZyyyyymm	DVD	3.0 GB	See FIZ	All portfolios	DX - 1962 Daily US Stock & Indices MX - 1962 Monthly US Stock & Indices IF - CRSP Supplemental US Indices
CRSP 1925 US Indices	IFZyyyyymm	CD	119 MB			IF - CRSP Supplemental US Indices
Daily & Monthly Treasuries	BAZyyyyymm	CD	981 MB			BD - Daily Treasuries BA - Monthly Treasuries
Daily Treasuries	BDZyyyyymm	CD	978 MB			BD - Daily Treasuries
Monthly Treasuries	BMZyyyyymm	CD	84.5 MB			BM - Monthly Treasuries
Mutual Fund Database	MFZyyyyymm	DVD	3.8 GB			MF - Mutual Funds
CRSP/Ziman Daily & Monthly REIT	RAZyyyyymm	CD	196 MB			RD - Daily REITs RM - Monthly REITs
CRSP/Ziman Monthly REIT	RMZyyyyymm	CD	186 MB			RM - Monthly REITs

DATA INSTALLATION

Instructions and screen shots for installation are written for Windows. Differences related to Linux and Sun or media are noted.

WINDOWS:

To install data, insert your DVD into the drive and from the Start Menu, select Run d:\setupwin32.exe. Click OK.

SUN SOLARIS (DVD INSTALL):

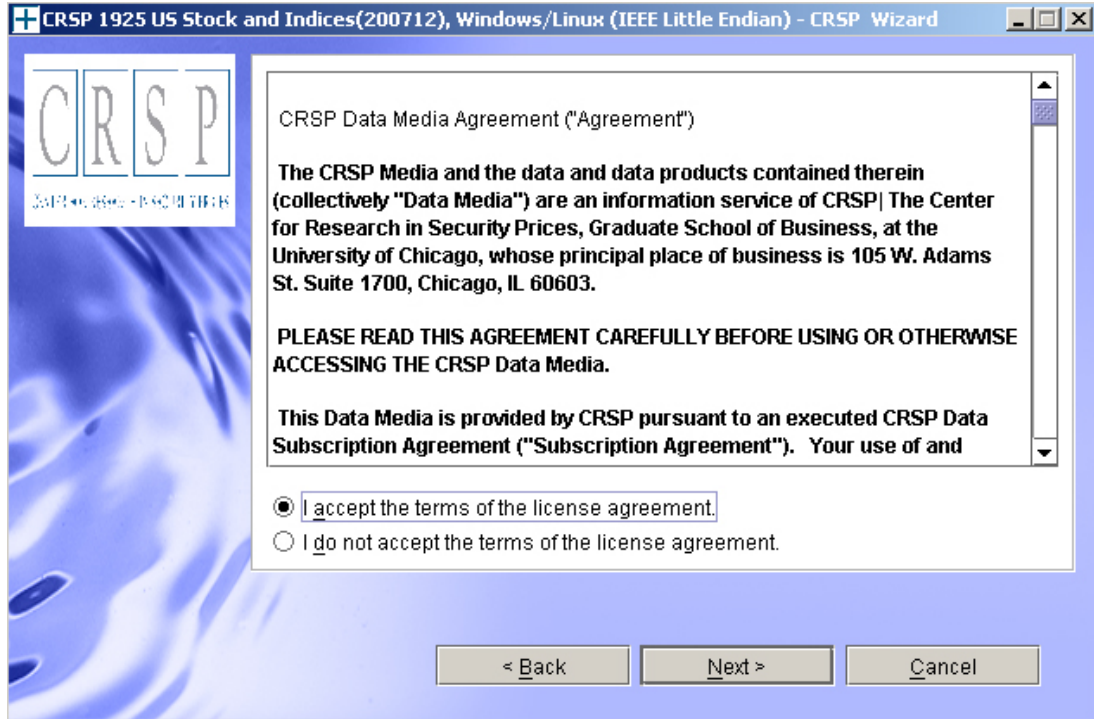
After inserting the DVD, a file manager will open with the file, `setupsolaris.bin`. Double click on this setup file to begin the installation process.

LINUX(DVD INSTALL):

Upon insertion of the DVD, a file manager will open with the file, `setuplinux.bin`. Double click on this setup file to begin the installation process.

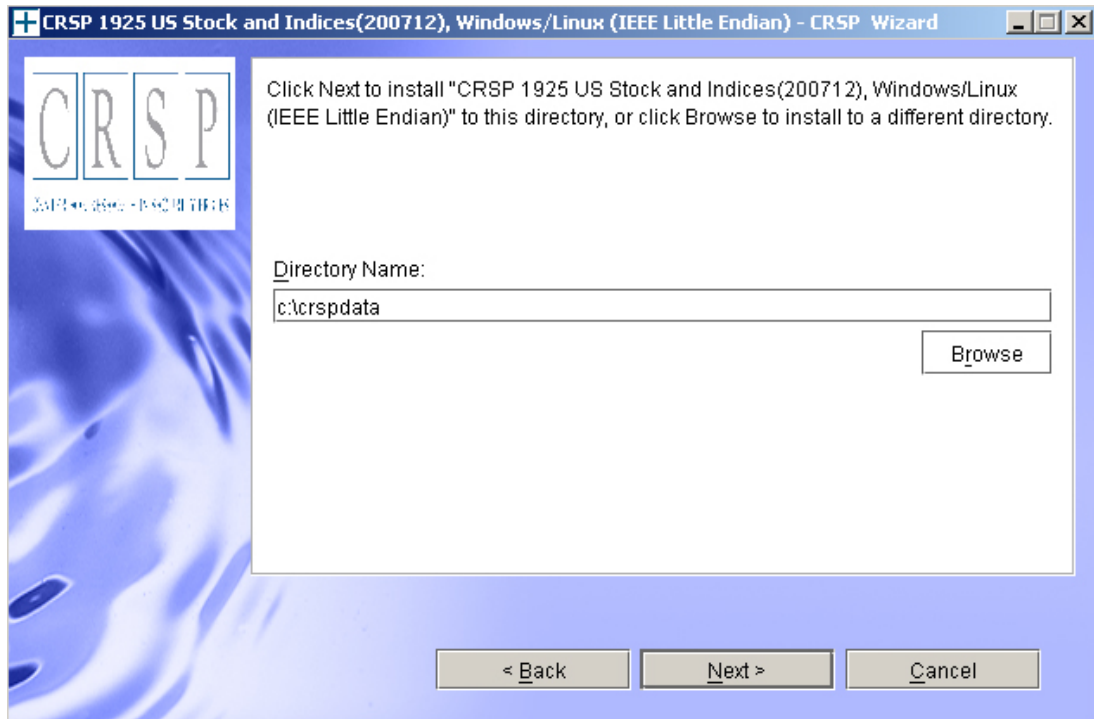


After clicking on **Next** on the Welcome screen, scroll through and read the CRSP Data and Utilities Agreement. Click to accept the terms of the license agreement. Click **Next**.

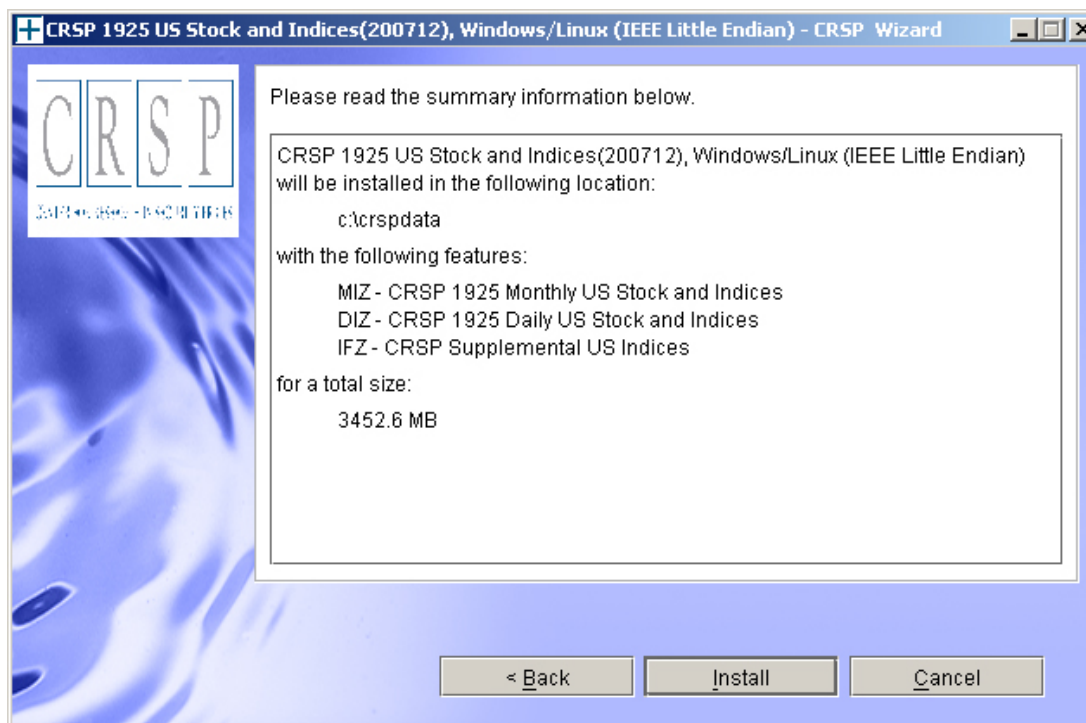


WINDOWS: The default directory for the data installation is `c:\crspdata`. You may accept or modify it. Click **Next**. Note: InstallShield does not verify available space. Please see the CRSPAccess Product Information chart on page 2 for space required for installation.

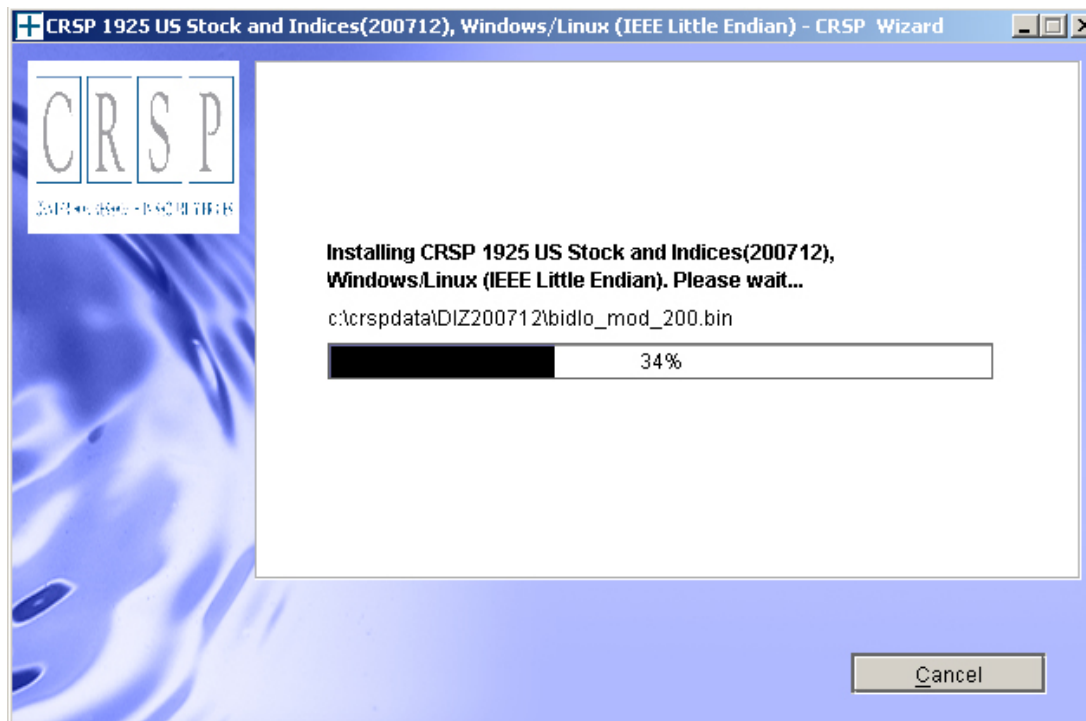
SUN SOLARIS & LINUX: The default directory for the data installation is `/crspdata`. You must have write permission to the directory you specify, for example, `/home/username/crspdata`. Note: InstallShield does not verify available space. Please see the CRSPAccess Product Information chart on page 2 for space required for installation.



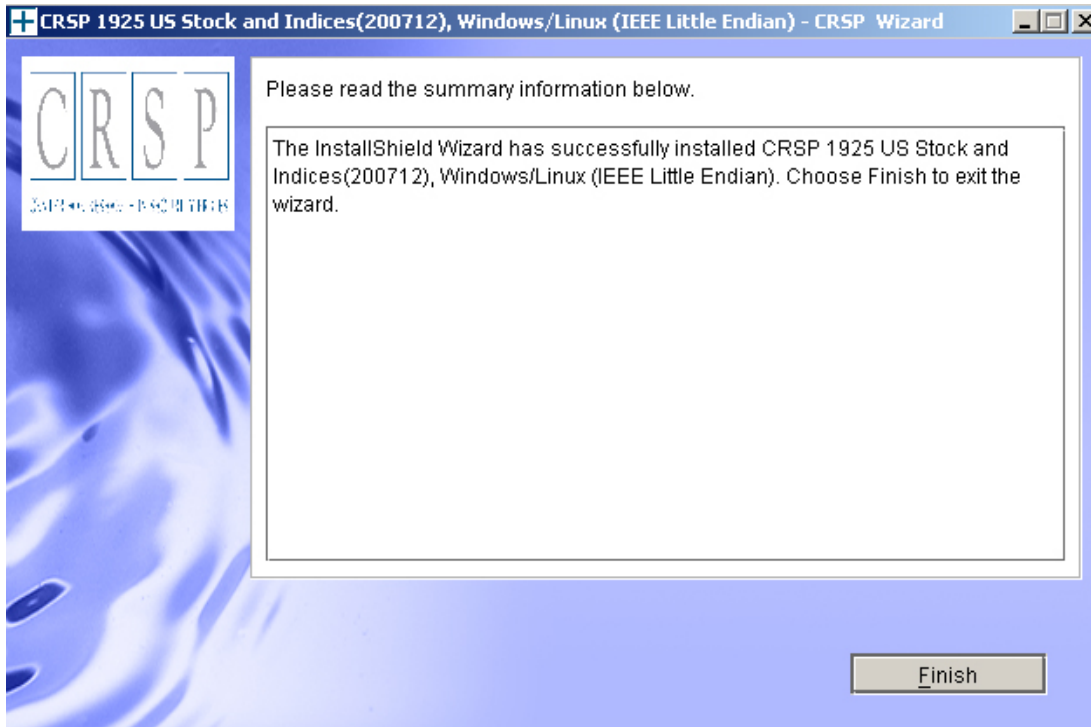
Summary information is displayed: Location, data components and the amount of space that is required for the data. Click on **Install** to proceed.



The screen will display the status of the installation.



A message indicating the success of the installation appears when the process is complete. Click **Finish**.



SUN SOLARIS & LINUX:

After clicking Finish, a file named `crsp.kshrc` must be run to set the local environment variables. At the prompt, type:

```
. ./crsp.kshrc <enter>
```

Note: If you are not using `ksh`, modifications will be necessary. Check with your Unix administrator.

WINDOWS:

Location of the software and data may be checked by opening CRSP Client Environment from the CRSPAccess menu. This new utility provides users a quick and simple way of both checking and switching environment variables if necessary. Where, in the past, users had to go through the Control Panel to manipulate the environment variables, this can now be done by quick editing of the Client Environment screen.

Note: For subscribers of the CRSP Compustat Merged database, an additional CCM database environment will be displayed for the location of the Compustat data.

The screenshot shows a window titled "CRSPAccess Client Environment" with a standard Windows title bar. The window contains five sections, each with a title, a description, a text input field, and a "Browse" button:

- CRSP Root**: CRSP Root Directory. This folder/directory contains the CRSP root subfolders that will allow the CRSP utilities to function properly. Path: C:\CRSP
- CRSP Monthly Stock**: CRSP Monthly Stock Database Directory. Path: c:\crspdata\MIZ200712\
- CRSP Daily Stock**: CRSP Daily Stock Database Directory. Path: c:\crspdata\DIZ200712\
- CRSP Work**: CRSP Work Directory. This folder/directory is used for storage of temporary files, log files and contains subfolders that may hold user created files. Path: C:\CRSP\work\
- CRSP Compustat CCM**: CRSP Compustat Merged Database Directory. Path: c:\crspdata\CPZ200712\

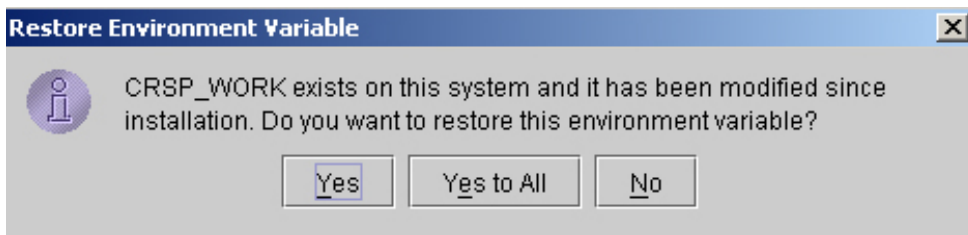
At the bottom of the window are three buttons: "Do", "Remove", and "Exit".

UNINSTALL

For each data install, an uninstall is created on the CRSPAcess menu. Data uninstalls do not touch software environment variables. Likewise, software uninstalls do not touch data environment variables. Each uninstall is done separately. As with the install, the uninstall is wizard-driven. When uninstall is complete, users may be prompted with an option to either reboot the computer or wait until later. It is not necessary to reboot the computer after uninstalling. This reboot message may be disregarded.

Uninstall & CRSP Client Environment

Each time a path is modified in client environment, the action is recorded. Upon running `uninstall`, a *Restore Environment Variable* prompt will appear:



This prompt appears for each variable for each modification. Answer each prompt and continue cycling through. **Yes** is the default, which will restore environment variables back to what they were prior to the install.