

These release notes pertain to the December 2010 Quarterly release of the CRSP US Stock and Index databases.

CITIGROUP VOLUMES

There are four dates where the daily trading volume for Citigroup ,PERMNO 70519, Ticker C, exceeds our database's maximum value (2147483648). Instead of inserting a false value into the database, we have listed the volumes for these dates as -99 (missing). The true trading volume values for those dates:

DATE	VOLUME
20090805	2674463281
20091217	3772638437
20091218	2813697156
20101207	3267829406

DECEMBER 2010 DATA EDITS

GROUP EDITS

BEGIN DATE	END DATE	DESCRIPTION
20091231	20101231	Reviewed and updated 60 securities for shares outstanding values that have not been updated in over a year from 2009-2010.
20091231	20100908	Reviewed and updated 105 securities for shares outstanding values that have not been updated in over a year from 2009-2010.
20101126	20101126	Corrected 98 cases where the closing prices were revised on 20101126

INDIVIDUAL EDITS

PERMNO	COMPANY NAME	BEGIN DATE	END DATE	DESCRIPTION
90643	ACCURIDE CORP	20081112	20101221	Added zero nameline to refelct off-exchange activity for 20081112-20101221.
84179	C N H GLOBAL N V	20030401	20101130	Changed name from C N H GLOVAL N V to C N H GLOBAL N V
92111	CARE INVESTMENT TRUST INC	20100826	20100826	Added next date of 20100903 and next price of 7.00.
70519	CITIGROUP INC	20091217	20091218	Changed volume to -99 from 2147483296 on 20091217 & 20091218
70519	CITIGROUP INC	20090805	20090805	Changed volume to -99 from 2147483000 on 20090805
79364	EK CHOR CHINA MOTORCYCLE CO LT	20030620	20030623	Changed delist code from 570 to 233 on 20030620 and added delisting distribution of 3.75 on 20030623.
86105	ENTERPRISE OIL PLC	20020626	20020626	Added next date of 20020627 and next price of -33.071.
87032	FLETCHER BUILDING LTD	20020815	20020816	Changed delist code from 551 to 331 on 20020815 and added delisting distribution of 20.63 on 20020816.
88923	FLETCHER BUILDING LTD	20020613	20020614	Changed delist code from 560 to 333 on 20020613 and added delisting distribution of 19.07 on 20020614.
62287	HUNT CORP	20021213	20021214	Changed delist code from 551 to 233 on 20021213 and added delisting distribution of 12.50 on 20021214.

PERMNO	COMPANY NAME	BEGIN DATE	END DATE	DESCRIPTION
90869	PHARMAXIS LTD	20080731	20080731	Changed closing price to -22.06 from -42.00, closing ask to 24.00 from 74.00 & closing bid to 20.12 from 10.00 on 20080731
90328	QUILMES INDUSTRIAL QUINSA S A	20080211	20080211	Added next date 20080220 and next price -76.20
83727	TELEFONICA DEL PERU SA	20040227	20040227	Changed delist code from 570 to 601 and added delisting distribution of 3.56 on 20040228 on 20040227.
91834	TRIANGLE CAPITAL CORP	20070215	20101229	Sharecode change from 11 to 14 for entire history.

NOVEMBER 2010 DATA EDITS

GROUP EDITS

BEGIN DATE	END DATE	DESCRIPTION
2004	2008	Reviewed 50 cases where duplicate data appeared in consecutive name history rows during 2004-2008. The duplicate rows were removed.

INDIVIDUAL EDITS

PERMNO	COMPANY NAME	BEGIN DATE	END DATE	DESCRIPTION
85340	BLACKROCK MUNIHLDS INV QLTY FD	19970929	20101130	Changed sharecode from 14 to 44 throughout entire history
60898	BOWL AMERICA INC	20101015	20101015	Added quarterly distribution with a dividend amount of \$0.155 on ex-date 20101015
38420	CHEMTURA CORP	19620813	20101130	Added zero name line for 20090319-20101110 to reflect off-exchange activity
92475	CHINA CERAMICS CO LTD	20091229	20101102	Added zero namelines for 20091229-20101102 to reflect off-exchange activity
65912	EQUITY INC FD 1ST SER A T & T SH			Changed sharecode from 73 to 74 for entire history
89063	KINGSWAY FINANCIAL SERVICES INC	20050311	20050311	Changed distribution code to 1332 from 1232 for distribution on ex-date 20050311
92494	LIBERTY ACQUISITION HLDGS CORP	20071219	20101029	Changed name from LIBERTY ACQUISITION HOLDGS CORP to LIBERTY ACQUISITION HLDGS CORP
89602	NUVEEN INS NY TX FR ADV MUN FD	20021122	20101029	Changed sharecode from 14 to 44
90092	SABRA HEALTHCARE REIT INC			Changed issuno to 67182 from 36839 and compno to 2003151 from 60051390 throughout entire history
79438	SUN HEALTHCARE GROUP INC			Changed compno to 2003151 from 60051390 throughout entire history
88806	UNITEK GLOBAL SERVICES INC	20050919	20101110	Added zero name line for 20010730-20101110 to reflect off-exchange activity
28388	VORNADO INC	19930326	19930326	Added 3-for-2 stock split on ex-date 19930326
11845	W P P PLC	20101006	20101006	Changed dividend amount to 0.48094 from 0.46132 for distribution on ex-date 20101006
86097	WASTE CONNECTIONS INC	20101027	20101027	Changed dividend amount to 0.15 from 0.075 for distribution on ex-date 20101027

INDIVIDUAL EDITS

PERMNO	COMPANY NAME	BEGIN DATE	END DATE	DESCRIPTION
87433	BIOTECH HOLDERS TR	20100908	20100908	Added regular distribution with a dividend amount of 0.00461 on ex-date 20100908.
58587	FITCHBURG GAS & ELEC LT CO	19751126	19751126	Changed closing price to -8.75 from -13.75 and added high & low prices of 8.875 & 8.625, respectively, on 19751126
87270	M F S CALIFORNIA MUNICIPAL FUND			Changed sharecode to 44 from 14 throughout entire history
92309	MAIN STREET CAPITAL CORP			Changed sharecode to 14 from 11 throughout entire history
89479	PHARMACEUTICAL HOLDERS TRUST	20100928	20100928	Added special distribution with a dividend amount of 0.1677 on ex-date 20100928.
82107	WESTAMERICA BANCORPORATION	19810810	19810810	Added high price of 14.50 on 19810810
92481	WESTERN LIBERTY BANCORP	20100225	20101028	Added zero name line for 20100225-20101028 to reflect off-exchange activity.

FILE VERSION SPECIFICS

This table contains version specific information for the CRSP Stock Files with data ending December 2010. It contains the number of securities and information about the maximums of the event arrays.

FILE CODE	# OF SECURITIES	MAX NAMES	MAX DIST	MAX SHARES	MAX DELISTS	MAX GROUPS	MAX NASDIN	FIRST PERMNO	LAST PERMNO
DAZ	28703	39	1261	918	1	4	2201	10000	93436
MAZ	28673	39	1261	918	1	4	2201	10000	93436

CALENDAR	DATE RANGE	DATE INDEX RANGE
Daily trading calendar	19251231-20101231	1-22529
Month-end trading calendar	19251231-20101231	1-1021
Year-end trading calendar	19251231-20111230	1-87
Quarter-end trading calendar	19251231-20111230	1-345
Weekly trading calendar	19260102-20101231	1-4435

CRSPACCESS PRODUCT INFORMATION

To simplify installation for our subscribers, data are bundled into product groups. Information relevant to each product group is listed in the table below.

PRODUCT NAME	DATABASE	MEDIA	SIZE	INDEXES	PORTFOLIOS	COMPONENTS & DESCRIPTION
CRSP 1925 US Stock and Index Database	FIZyyyyymm	DVD	3.5 GB	All CRSP indexes and portfolio asignments	All portfolios	DI - 1925 Daily US Stock & Index Database MI - 1925 Monthly US Stock & Index Database IF - CRSP Supplemental US Indexes
CRSP 1925 US Stock	FAZyyyyymm	DVD	3.2 GB	CRSP NYSE/ AMEX/ NASDAQ Value-weighted Market, CRSP NYSE/ AMEX/ NASDAQ Equal-weighted Market, S&P 500 Composite, NASDAQ Composite	NYSE/ AMEX/ NASDAQ Capitalization Deciles	DA - 1925 Daily US Stock MA - 1925 Monthly US Stock IN - CRSP Limited US Indexes
CRSP 1962 US Stock	A6Zyyyyymm	DVD	2.8 GB	CRSP NYSE/ AMEX/ NASDAQ Value-weighted Market, CRSP NYSE/ AMEX/ NASDAQ Equal-weighted Market, S&P 500 Composite, NASDAQ Composite	NYSE/ AMEX/ NASDAQ Capitalization Deciles	D6 - 1962 Daily US Stock M6 - 1962 Monthly US Stock IN - CRSP Limited US Indexes
CRSP 1962 US Stock and Index Database	AXZyyyyymm	DVD	3.1 GB	See FIZ	All portfolios	DX - 1962 Daily US Stock & Index Database MX - 1962 Monthly US Stock & Index Database IF - CRSP Supplemental US Indexes
CRSP 1925 US Indexes	IFZyyyyymm	DVD	114 MB			IF - CRSP Supplemental US Indexes
Daily & Monthly Treasuries	TRZyyyyymm	DVD	147 MB			TRZ - Daily and Monthly Treasuries
Daily Treasuries	BDZyyyyymm	DVD	990 MB			BD - Daily Treasuries
Monthly Treasuries	BMZyyyyymm	DVD	92.7 MB			BM - Monthly Treasuries
Mutual Fund Database	MFZyyyyymm	DVD	4.9 GB			MF - Mutual Funds
CRSP/Ziman Daily & Monthly REIT	RAZyyyyymm	DVD	164 MB			RD - Daily REITs RM - Monthly REITs
CRSP/Ziman Monthly REIT	RMZyyyyymm	DVD	8 MB			RM - Monthly REITs

DATA INSTALLATION

Instructions and screen shots for installation are written for Windows. Differences related to Linux and Sun or media are noted.

WINDOWS:

To install data, insert your DVD into the drive and from the Start Menu, select Run d:\setupwin32.exe. Click OK.

SUN SOLARIS (DVD INSTALL):

After inserting the DVD, a file manager will open with the file, `setupsolaris.bin`. Double click on this setup file to begin the installation process.

LINUX(DVD INSTALL):

Upon insertion of the DVD, a file manager will open with the file, `setuplinux.bin`. Double click on this setup file to begin the installation process.



After clicking on **Next** on the Welcome screen, scroll through and read the CRSP Data and Utilities Agreement. Click to accept the terms of the license agreement. Click **Next**.

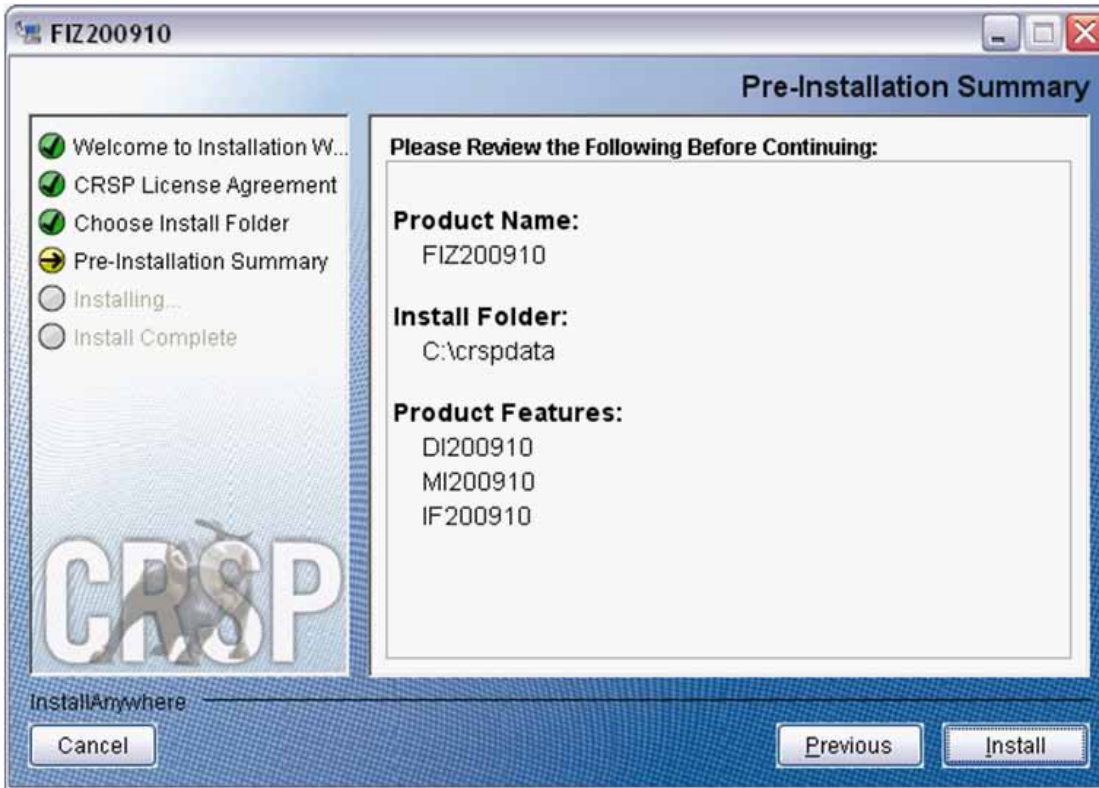


WINDOWS: The default directory for the data installation is `c:\crspdata`. You may accept or modify it. Click **Next**.

SUN SOLARIS & LINUX: The default directory for the data installation is `/crspdata`. You must have write permission to the directory you specify, for example, `/home/username/crspdata`.



Summary information is displayed: Location, data components and the amount of space that is required for the data. Click on **Install** to proceed.



The screen will display the status of the installation.



A message indicating the success of the installation appears when the process is complete. Click **Done**.



LINUX AND SUN SOLARIS ENVIRONMENT VARIABLES

Important Change for Sun Solaris & Linux Installations:

Following previous installs, the `crsp.kshrc` file was run upon completion to set both environment variables and software alias values. This new version of InstallAnywhere sets the environment variables directly on the system when the software is installed. The `crsp.kshrc` file must still be run to set the aliases.

A user may wish to revert back to a previous cut of data or a previous version of the software. In order to do so, CRSP provides shell scripts for users to run that will create a custom-named `kshrc` file that the user may run to set environment variables at the session level. This process also provides a way for a system administrator to create a script that can be put into the system login process so that the environment variables are seen by all users.

To use a shell script for generating an initialization script file, follow these steps:

1. `cd` to the root directory where program files have been loaded.

```
cd accbin
```

2. If you are running `cs` shell, enter

```
source crsp_setup.csh
```

If you are running `ksh` or `bash` shell, enter

```
./ crsp_setup.sh
```


- The script will prompt for data, root, and log directories. Follow the instructions on the prompts in terms of trailing slashes in directory names.

The script will create new scripts, `mycrsp.cshrc` in `csh` or `mycrsp.kshrc` in `ksh`. `mycrsp` is the default that may be changed.

Note: When creating a custom `kshrc` file, be aware that it will overwrite a like-named file if one exists rather than create a new version. The `kshrc` file will overwrite all environment variables, so must be completely filled in.

`env | grep CRSP` can be used to check the CRSP environment variables set.

WINDOWS:

Location of the software and data may be checked by opening CRSP Client Environment from the CRSPAccess menu. This new utility provides users a quick and simple way of both checking and switching environment variables if necessary. Where, in the past, users had to go through the Control Panel to manipulate the environment variables, this can now be done by quick editing of the Client Environment screen.

Note: For subscribers of the CRSP Compustat Merged database, additional CCM database environments will be displayed for the location of the Compustat data.



UNINSTALL

To uninstall the data, go through Start > Control Panel > Add or Remove Programs. The data will appear in the Add or Remove Programs list as the volume label and cut date of the database. For example, the October cut of the 1925 US Stock and Index Database will be displayed as FIZ200910. Highlight your selection, click on the Change/Remove button and follow the prompts.