

These release notes pertain to the July 2011 Monthly release of the CRSP US Stock and Index databases.

JULY 2011 DATA EDITS

PERMNO	COMPANY NAME	BEGIN DATE	END DATE	DESCRIPTION
92807	AMERISERV FINANCIAL INC	19961230	19961230	Changed distribution code to 1272 from 1232 on ex-date 19961230
14198	ANALOGIC CORP	19961010	19961010	Deleted distribution on ex-date 19961010
91517	ASSISTED LIVING CONCEPTS INC NEW	20110518	20110518	Changed dividend amount to 0.20 from 0.10 on ex-date 20110518
29946	BROWN FORMAN CORP	20101208	20101208	Changed distribution code to 1272 from 1232 on ex-date 20101208
23393	CHURCH & DWIGHT INC	20110512	20110512	Changed dividend amount to 0.34 from 0.17 on ex-date 20110512
34841	COVANTA ENERGY CORP	19901226	19901226	Changed distribution code to 1272 from 1232 on ex-date 19901226
22859	D P L INC	20041112	20041112	Removed two distributions on ex-date 20041112 and replaced them with one distribution with distribution code 1212 and dividend amount of 0.72
22867	DE SOTO INC	19901203	19901221	Changed distribution code to 2235 from 1272 on ex-dates 19901203 & 19901221
37584	FRANKLIN RESOURCES INC	20091223	20091223	Changed distribution code to 1272 from 1232 on ex-date 20091223
32096	GARAN INC	19901114	19901114	Changed distribution code to 1272 from 1232 on ex-date 19901114
53604	GORMAN RUPP CO	20110511	20110511	Changed dividend amount to 0.1125 from 0.09 on ex-date 20110511
92009	HQ SUSTAINABLE MARITIME INDS INC	20110401	20110630	Removed all data from 20110404-20110630 and added delisting information on 20110401.
55853	INTEGRATED RESOURCES INC	19900516	20010213	Removed all data from permno 55853 for 19900516-20010213 and added it to permno 12928
12928	INTEGRATED SURGICAL SYSTEMS INC			Added all data from permno 55853 for 19961121-20010213
64995	KEYCORP NEW	19921224	19921224	Deleted extraneous distribution on ex-date 19921224
88488	MARKET 2000 HOLDRS TR	20110330	20110330	Added distributions with dividend amounts of 0.01494 and 0.10044 on ex-date 20110330.
54253	MINE SAFETY APPLIANCES CO	20031112	20031112	Changed distribution code to 2235 from 1232 on ex-date 20031112
11803	MITEK SYSTEMS INC	20040525	20110713	Added zero nameline to reflect off-exchange activity for 20040525-20110713
11803	MITEK SYSTEMS INC	20040525	20110713	Added zero nameline to reflect off-exchange activity for 20040525-20110713
61444	NATIONAL GAS & OIL CO	19980612	19980617	Deleted distribution on ex-date 19980612 & added declare date of 19980616 to distribution on ex-date 19980617
87339	PARTNER COMMUNICATIONS CO LTD	20110627	20110627	Changed dividend amount to 0.386874 from 0.38236 on ex-date 20110627.
82800	SOUTHERN COPPER CORP	20100207	20100207	Deleted distribution on ex-date 20100207
65293	TERRA INDUSTRIES INC	20100330	20100330	Changed distribution code to 1272 from 1232 on ex-date 20100330
76840	TREADCO INC	19970505	19970505	Deleted distribution on ex-date 19970505
75418	VODAFONE GROUP PLC NEW	20110601	20110601	Changed dividend amount to 0.986876 from 0.979918 on ex-date 20110601.
11845	W P P PLC	20110601	20110601	Changed dividend amount to 0.945718 from 0.95018 on ex-date 20110601.
77217	WISDOMTREE INVESTMENTS INC	20010523	20110725	Added zero namelines to reflect off-exchange activity for 20010523-20110725
93090	YUHE INTERNATIONAL INC	20110617	20110630	Removed all data from 20110620-20110630 and added delisting information on 20110617.

FILE VERSION SPECIFICS

This table contains version specific information for the CRSP Stock Files with data ending July 2011. It contains the number of securities and information about the maximums of the event arrays.

FILE CODE	# OF SECURITIES	MAX NAMES	MAX DISTS	MAX SHARES	MAX DELISTS	MAX GROUPS	MAX NASDIN	FIRST PERMNO	LAST PERMNO
DAZ	29022	39	1343	1061	1	4	2264	10000	93436
MAZ	28993	39	1343	1061	1	4	2264	10000	93436

CALENDAR	DATE RANGE	DATE INDEX RANGE
Daily trading calendar	19251231-20110729	1-22674
Month-end trading calendar	19251231-20110729	1-1028
Year-end trading calendar	19251231-20121231	1-88
Quarter-end trading calendar	19251231-20121231	1-349
Weekly trading calendar	19260102-20110729	1-4465

CRSPACCESS PRODUCT INFORMATION

To simplify installation for our subscribers, data are bundled into product groups. Information relevant to each product group is listed in the table below.

PRODUCT NAME	DATABASE	MEDIA	SIZE	INDEXES	PORTFOLIOS	COMPONENTS & DESCRIPTION
CRSP 1925 US Stock and Index Database	FIZyyyyymm	DVD	3.6 GB	All CRSP indexes and portfolio assignments	All portfolios	DI - 1925 Daily US Stock & Index Database MI - 1925 Monthly US Stock & Index Database IF - CRSP Supplemental US Indexes
CRSP 1925 US Stock	FAZyyyyymm	DVD	3.2 GB	CRSP NYSE/ AMEX/ NASDAQ Value-weighted Market, CRSP NYSE/ AMEX/ NASDAQ Equal-weighted Market, S&P 500 Composite, NASDAQ Composite	NYSE/ AMEX/ NASDAQ Capitalization Deciles	DA - 1925 Daily US Stock MA - 1925 Monthly US Stock IN - CRSP Limited US Indexes
CRSP 1962 US Stock	A6Zyyyyymm	DVD	2.9 GB	CRSP NYSE/ AMEX/ NASDAQ Value-weighted Market, CRSP NYSE/ AMEX/ NASDAQ Equal-weighted Market, S&P 500 Composite, NASDAQ Composite	NYSE/ AMEX/ NASDAQ Capitalization Deciles	D6 - 1962 Daily US Stock M6 - 1962 Monthly US Stock IN - CRSP Limited US Indexes
CRSP 1962 US Stock and Index Database	AXZyyyyymm	DVD	3.1 GB	See FIZ	All portfolios	DX - 1962 Daily US Stock & Index Database MX - 1962 Monthly US Stock & Index Database IF - CRSP Supplemental US Indexes
CRSP 1925 US Indexes	IFZyyyyymm	DVD	114 MB			IF - CRSP Supplemental US Indexes
CRSP/Compustat Merged Database	CMZyyyyymm	DVD	7.2 GB			CM - Compustat Data formatted in CRSPAccess Database
Daily & Monthly Treasuries in CRSPSift	TRZyyyyymm	DVD	214 MB			TR - Database format for use with CRSPSift
Daily & Monthly Treasuries Files	TFZyyyyymm	DVD	1.13 MB			TF - New expanded daily and monthly files in EXCEL, SAS, and ASCII formats

PRODUCT NAME	DATABASE	MEDIA	SIZE	INDEXES	PORTFOLIOS	COMPONENTS & DESCRIPTION
Daily & Monthly Legacy Treasuries Files	TLZyymm	DVD	1.10 GB			TL - Legacy daily and monthly files in EXCEL, SAS, and ASCII formats
Mutual Fund Database	MFZyyyyymm	DVD	5.8 GB			MF - Mutual Funds
CRSP/Ziman Daily & Monthly REIT	RAZyyyyymm	DVD	205 MB			RD - Daily REITs RM - Monthly REITs
CRSP/Ziman Monthly REIT	RMZyyyyymm	DVD	9.7 MB			RM - Monthly REITs

DATA INSTALLATION

Instructions and screen shots for installation are written for Windows. Differences related to Linux and Sun or media are noted.

WINDOWS:

To install data, insert your DVD into the drive and from the Start Menu, select Run d:\setupwin32.exe. Click OK.

SUN SOLARIS (DVD INSTALL):

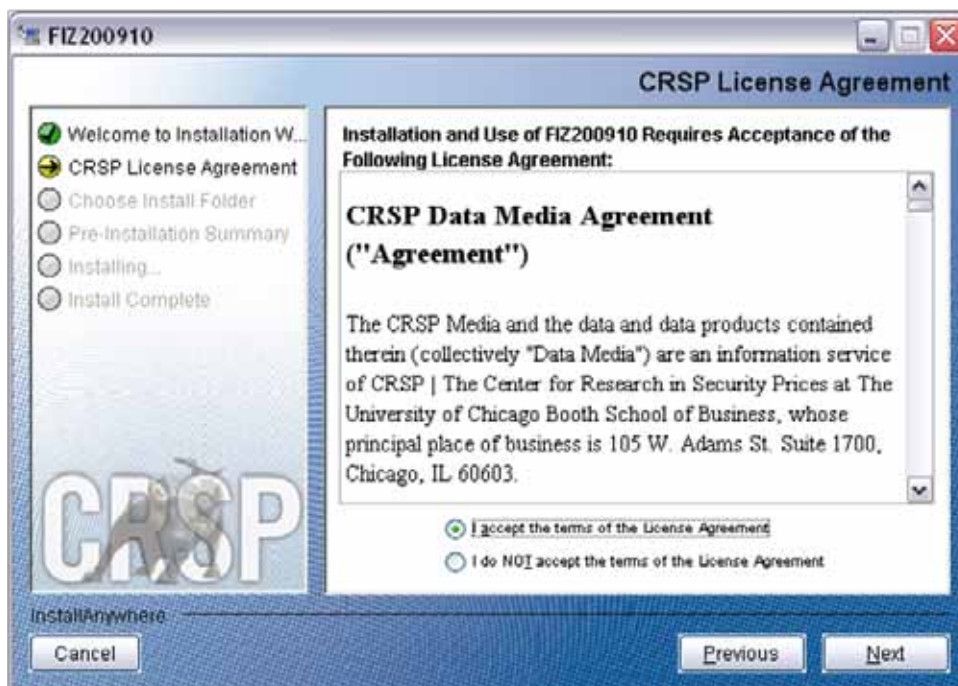
After inserting the DVD, a file manager will open with the file, `setupsolaris.bin`. Double click on this setup file to begin the installation process.

LINUX(DVD INSTALL):

Upon insertion of the DVD, a file manager will open with the file, `setuplinux.bin`. Double click on this setup file to begin the installation process.



After clicking on **Next** on the Welcome screen, scroll through and read the CRSP Data and Utilities Agreement. Click to accept the terms of the license agreement. Click **Next**.

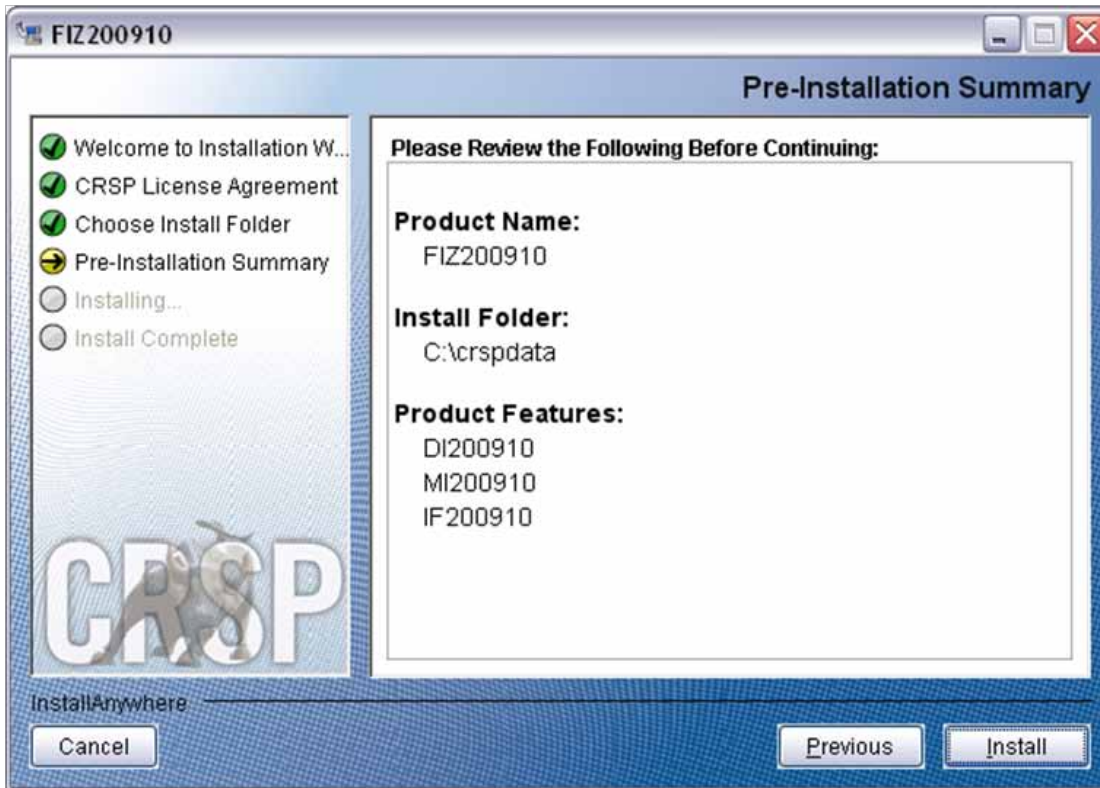


WINDOWS: The default directory for the data installation is `c:\crspdata`. You may accept or modify it. Click **Next**.

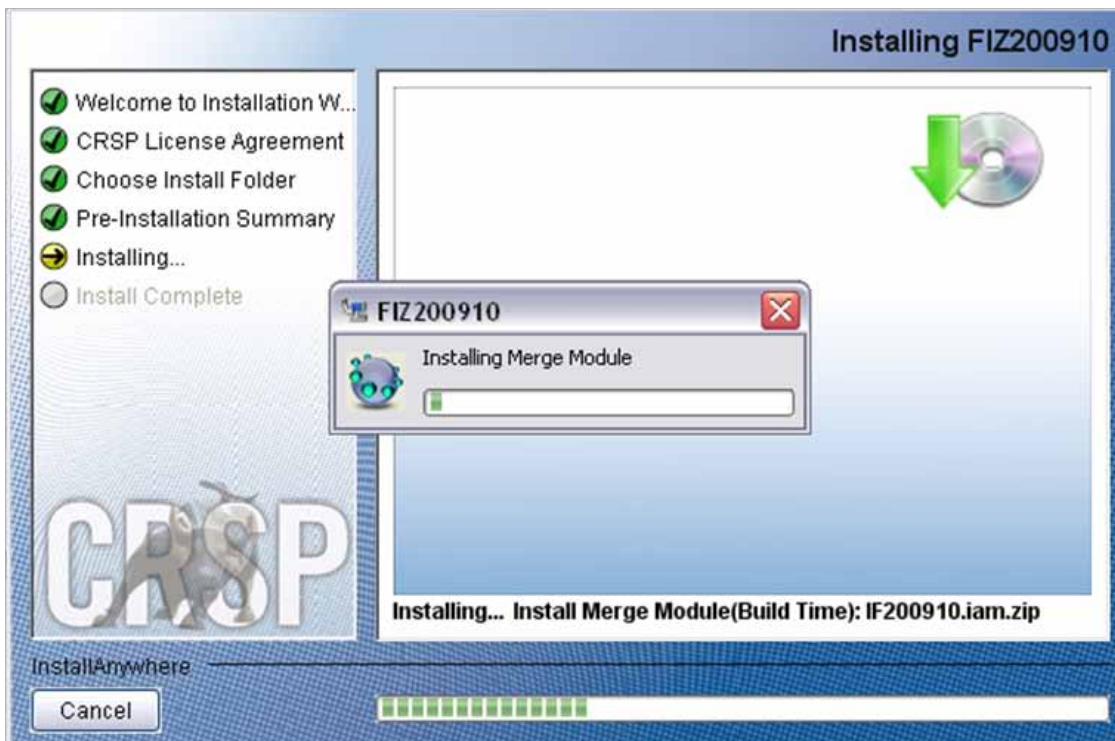
SUN SOLARIS & LINUX: The default directory for the data installation is `/crspdata`. You must have write permission to the directory you specify, for example, `/home/username/crspdata`.



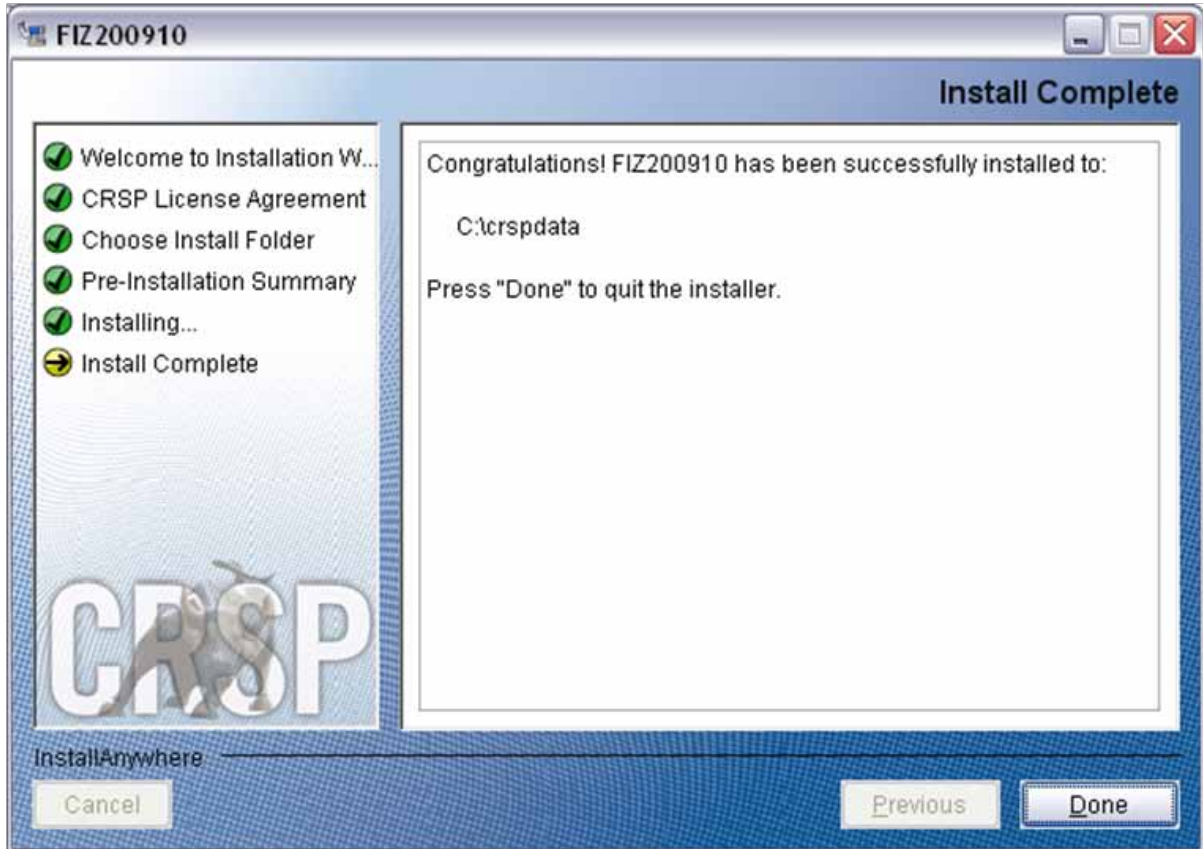
Summary information is displayed: Location, data components and the amount of space that is required for the data. Click on **Install** to proceed.



The screen will display the status of the installation.



A message indicating the success of the installation appears when the process is complete. Click **Done**.



LINUX AND SUN SOLARIS ENVIRONMENT VARIABLES

Important Change for Sun Solaris & Linux Installations:

Following previous installs, the `crsp.kshrc` file was run upon completion to set both environment variables and software alias values. This new version of InstallAnywhere sets the environment variables directly on the system when the software is installed. The `crsp.kshrc` file must still be run to set the aliases.

A user may wish to revert back to a previous cut of data or a previous version of the software. In order to do so, CRSP provides shell scripts for users to run that will create a custom-named `kshrc` file that the user may run to set environment variables at the session level. This process also provides a way for a system administrator to create a script that can be put into the system login process so that the environment variables are seen by all users.

To use a shell script for generating an initialization script file, follow these steps:

1. `cd` to the root directory where program files have been loaded.

```
cd accbin
```

2. If you are running `cs` shell, enter

```
source crsp_setup.csh
```

If you are running `ksh` or `bash` shell, enter

```
./ crsp_setup.sh
```

- The script will prompt for data, root, and log directories. Follow the instructions on the prompts in terms of trailing slashes in directory names.

The script will create new scripts, `mycrsp.cshrc` in `csh` or `mycrsp.kshrc` in `ksh`. `mycrsp` is the default that may be changed.

Note: When creating a custom `kshrc` file, be aware that it will overwrite a like-named file if one exists rather than create a new version. The `kshrc` file will overwrite all environment variables, so must be completely filled in.

`env | grep CRSP` can be used to check the CRSP environment variables set.

WINDOWS:

Location of the software and data may be checked by opening CRSP Client Environment from the CRSPAccess menu. This new utility provides users a quick and simple way of both checking and switching environment variables if necessary. Where, in the past, users had to go through the Control Panel to manipulate the environment variables, this can now be done by quick editing of the Client Environment screen.

Note: For subscribers of the CRSP Compustat Merged database, additional CCM database environments will be displayed for the location of the Compustat data.



UNINSTALL

To uninstall the data, go through Start > Control Panel > Add or Remove Programs. The data will appear in the Add or Remove Programs list as the volume label and cut date of the database. For example, the October cut of the 1925 US Stock and Index Database will be displayed as FIZ200910. Highlight your selection, click on the Change/Remove button and follow the prompts.