

These release notes pertain to the January 2013 Monthly release of the CRSP US Stock and Index databases.

JANUARY 2013 DATA EDITS

GROUP EDITS

BEGIN DATE	END DATE	DESCRIPTION
0	0	Reviewed list of 67 permnos with unconfirmed sharecodes (10,30,50,70,80), and replaced with confirmed sharecodes (11,14,31,51,71,81,88,89,7) over the period 1972-2006.

INDIVIDUAL EDITS

PERMNO	COMPANY NAME	BEGIN DATE	END DATE	DESCRIPTION
87152	CENTURY REALTY TRUST	19990827	19990827	Added price and shares data for 19990827
92982	DEER CONSUMER PRODUCTS INC	20120810	20130110	Removed halt record from 20120813-20130110 and added delist array on 20120810.
89812	GRANITE REAL ESTATE INVST TRUST	20120523	20121120	Changed distribution code to 1332 from 1232 for dividends on ex-dates 20120523 and 20121120. Changed distribution code to 1332 from 1232 and dividend amount to 0.506430 from 0.502750 for dividend on ex-date 20120822.
78741	GREAT BASIN GOLD LTD	20120914	20130129	Removed halt record from 20120917-20130128 and added delist array on 20120914
87381	HONG KONG TELEVISION NETWORK LTD	20121231	20121231	Changed dividend amount to 0.386877 from 0.387091 on ex-date 20121231.
44768	INTERFACE INC	20120514	20121231	Removed Class A from ticker for 20120514-present
69534	M L MACADAMIA ORCHARDS L P	19860605	20130131	Changed name to MAUNA LOA MACADAMIA PARTNERS LP from MAUNA LOA MACADAMIA PARTNERS for 19860605-19981004.
77069	NUVEEN MI QLTY INC MUNI FD INC	19911017	20121231	Name changed to NUVEEN MI QLTY INC MUNI FD INC from NUVEEN MI INC QLTY MUNI FD INC for the entire history.
13586	PENTAIR LTD			Changed distribution code to 1232 from 1222 for distribution on ex-date 20121024

FILE VERSION SPECIFICS

This table contains version specific information for the CRSP Stock Files with data ending January 2013. It contains the number of securities and information about the maximums of the event arrays.

FILE CODE	# OF SECURITIES	MAX NAMES	MAX DIST	MAX SHARES	MAX DELISTS	MAX GROUPS	MAX NASDIN	FIRST PERMNO	LAST PERMNO
DAZ	29592	39	1538	1435	1	4	2409	10000	93436
MAZ	29563	39	1538	1435	1	4	2409	10000	93436

CALENDAR	DATE RANGE	DATE INDEX RANGE
Daily trading calendar	19251231-20130131	1-23052
Month-end trading calendar	19251231-20130131	1-1046
Year-end trading calendar	19251231-20141231	1-90
Quarter-end trading calendar	19251231-20141231	1-357
Weekly trading calendar	19260102-20130131	1-4544

CRSPACCESS PRODUCT INFORMATION

To simplify installation for our subscribers, data are bundled into product groups. Information relevant to each product group is listed in the table below.

PRODUCT NAME	DATABASE	MEDIA	SIZE	INDEXES	PORTFOLIOS	COMPONENTS & DESCRIPTION
CRSP 1925 US Stock and Index Database	FIZyyyyymm	DVD	3.8 GB	All CRSP indexes and portfolio assignments	All portfolios	DI - 1925 Daily US Stock & Index Database MI - 1925 Monthly US Stock & Index Database IF - CRSP Supplemental US Indexes
CRSP 1925 US Stock	FAZyyyyymm	DVD	3.4 GB	CRSP NYSE/ AMEX/ NASDAQ Value-weighted Market, CRSP NYSE/ AMEX/ NASDAQ Equal-weighted Market, S&P 500 Composite, NASDAQ Composite		DA - 1925 Daily US Stock MA - 1925 Monthly US Stock IN - CRSP Limited US Indexes
CRSP 1962 US Stock	A6Zyyyyymm	DVD	3.0 GB	CRSP NYSE/ AMEX/ NASDAQ Value-weighted Market, CRSP NYSE/ AMEX/ NASDAQ Equal-weighted Market, S&P 500 Composite, NASDAQ Composite		D6 - 1962 Daily US Stock M6 - 1962 Monthly US Stock IN - CRSP Limited US Indexes
CRSP 1962 US Stock and Index Database	AXZyyyyymm	DVD	3.3 GB	See FIZ	All portfolios	DX - 1962 Daily US Stock & Index Database MX - 1962 Monthly US Stock & Index Database IF - CRSP Supplemental US Indexes
CRSP 1925 US Indexes	IFZyyyyymm	DVD	116 MB			IF - CRSP Supplemental US Indexes
CRSP/Compustat Merged Database	CMZyyyyymm	DVD	8.28 GB			CM - Compustat Data formatted in CRSPAccess Database
Daily & Monthly Treasuries in CRSPSift	TRZyyyyymm	DVD	226 MB			TR - Database format for use with CRSPSift
Daily & Monthly Treasuries Files	TFZyyyyymm	DVD	1.2 GB			TF - New expanded daily and monthly files in EXCEL, SAS, and ASCII formats
Daily & Monthly Legacy Treasuries Files	TLZyyyyymm	DVD	1.16 GB			TL - Legacy daily and monthly files in EXCEL, SAS, and ASCII formats
Mutual Fund Database	MFZyyyyymm	DVD	6 GB			MF - Mutual Funds
CRSP/Ziman Daily & Monthly REIT	RAZyyyyymm	DVD	217 MB			RD - Daily REITs RM - Monthly REITs
CRSP/Ziman Monthly REIT	RMZyyyyymm	DVD	10.3 MB			RM - Monthly REITs

DATA INSTALLATION

Instructions and screen shots for installation are written for Windows. Differences related to Linux and Sun or media are noted.

WINDOWS:

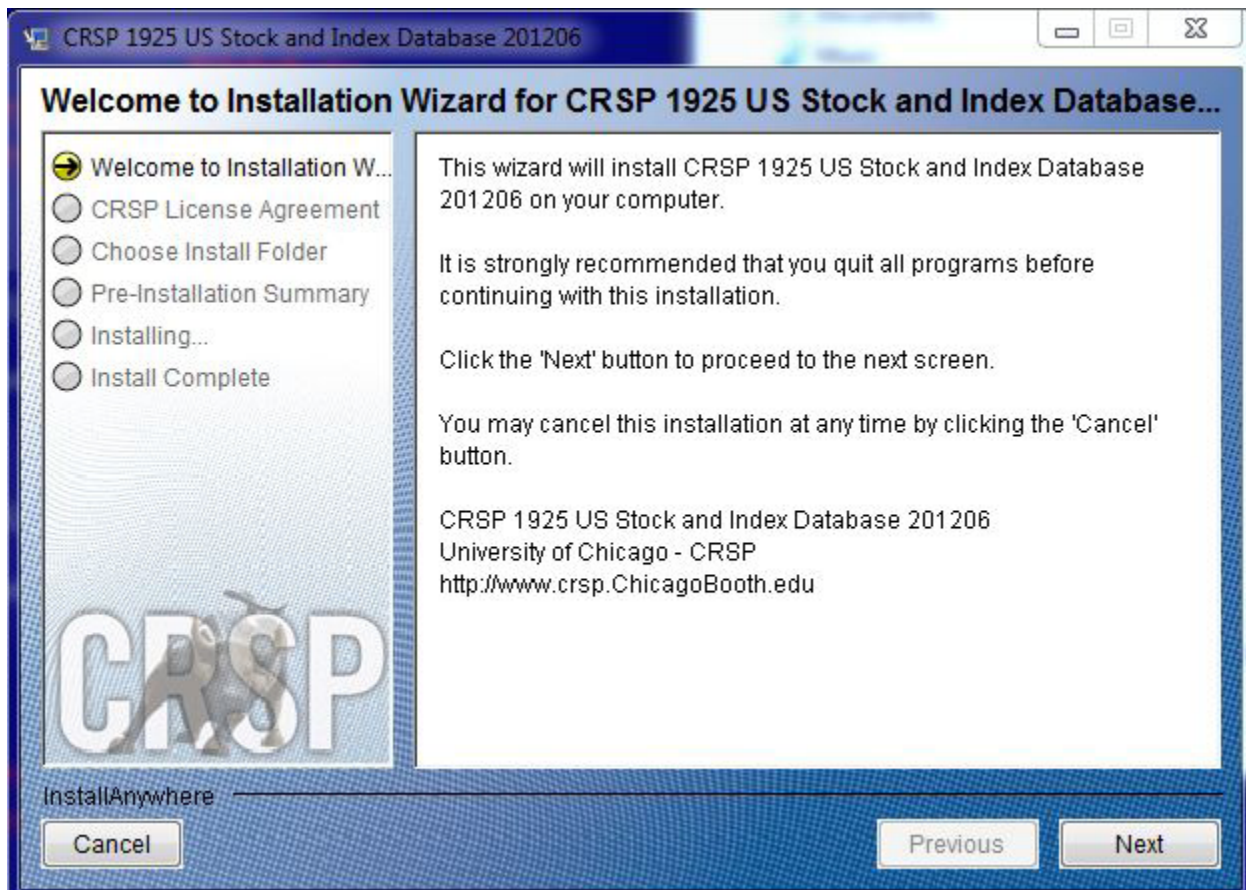
To install data, insert your DVD into the drive and from the Start Menu, select Run d:\setupwin32.exe. Click OK.

SUN SOLARIS (DVD INSTALL):

After inserting the DVD, a file manager will open with the file, `setupsolaris.bin`. Double click on this setup file to begin the installation process.

LINUX(DVD INSTALL):

Upon insertion of the DVD, a file manager will open with the file, `setuplinux.bin`. Double click on this setup file to begin the installation process.

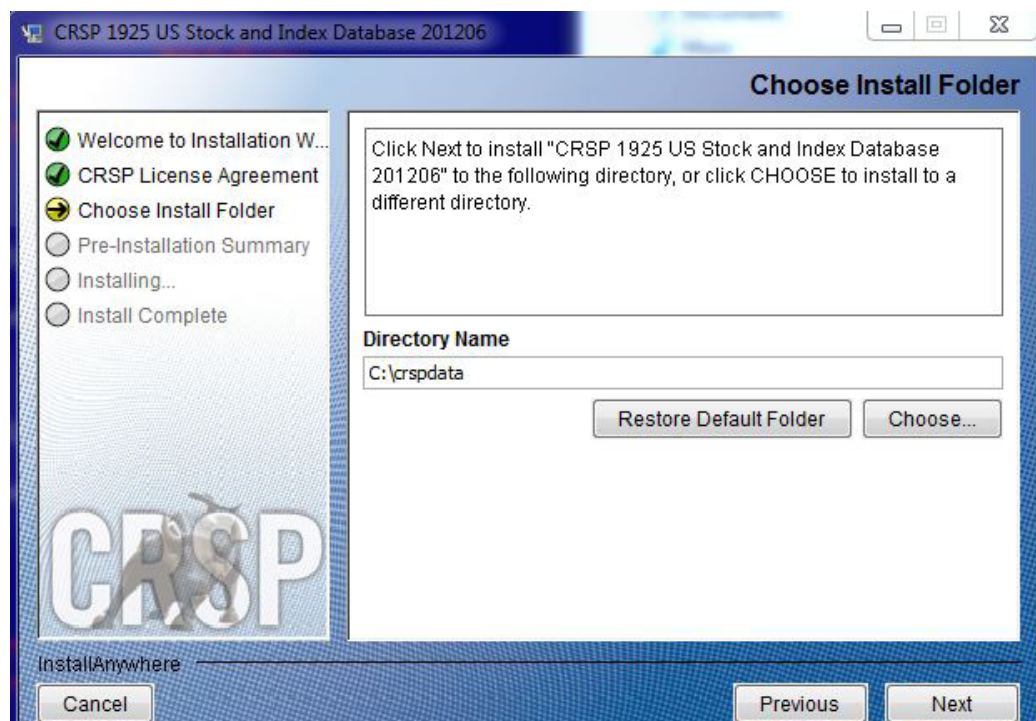


After clicking on **Next** on the Welcome screen, scroll through and read the CRSP Data and Utilities Agreement. Click to accept the terms of the license agreement. Click **Next**.

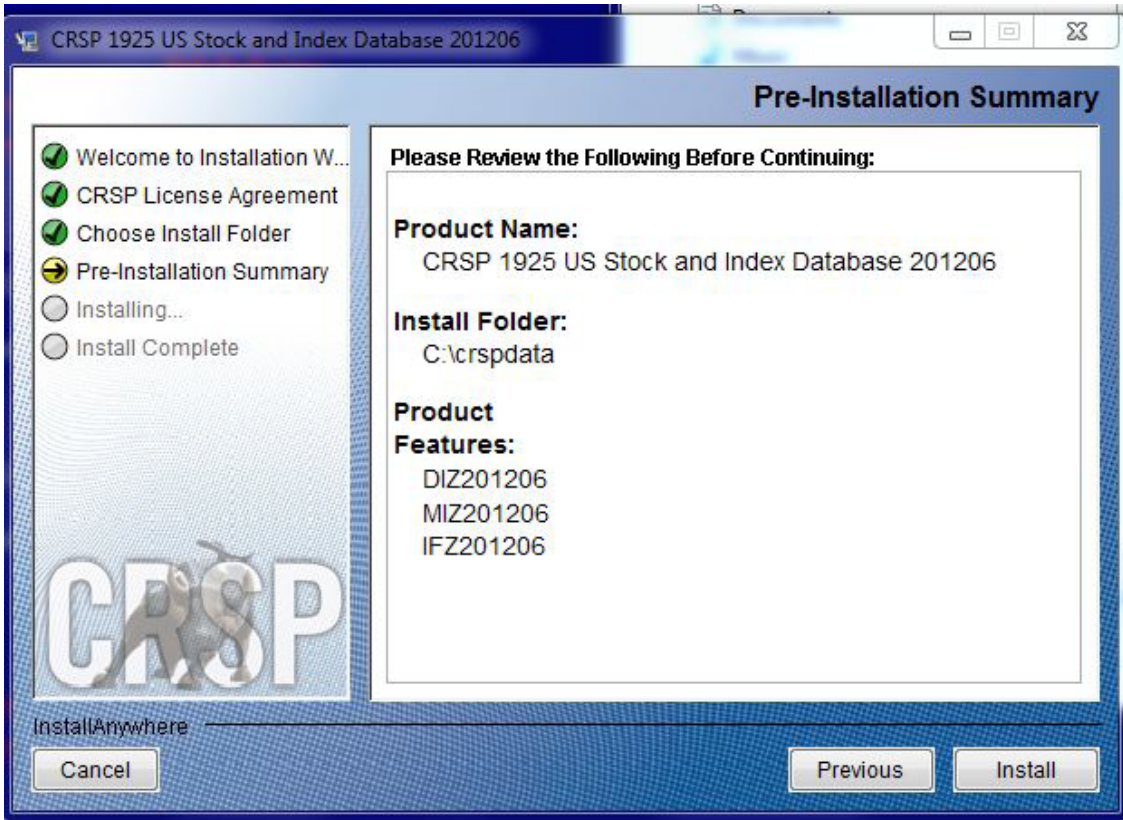


WINDOWS: The default directory for the data installation is `c:\crspdata`. You may accept or modify it. Click **Next**.

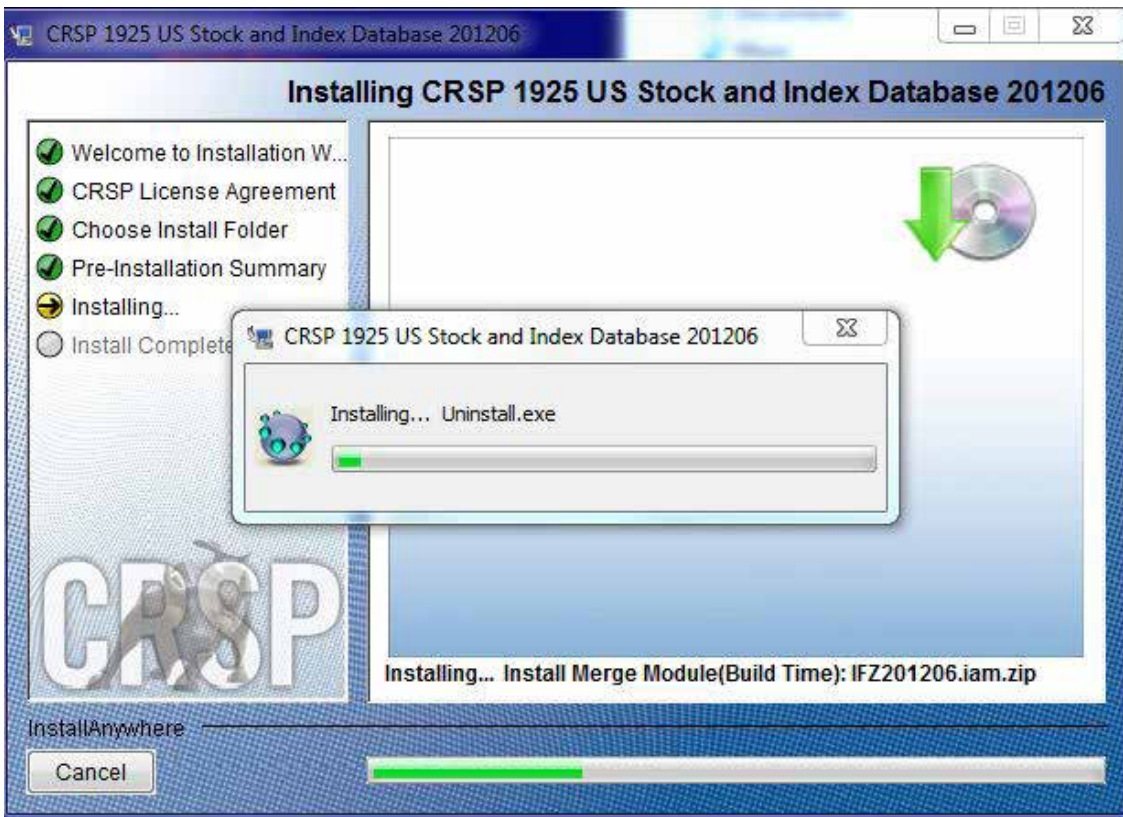
SUN SOLARIS & LINUX: The default directory for the data installation is `/crspdata`. You must have write permission to the directory you specify, for example, `/home/username/crspdata`.



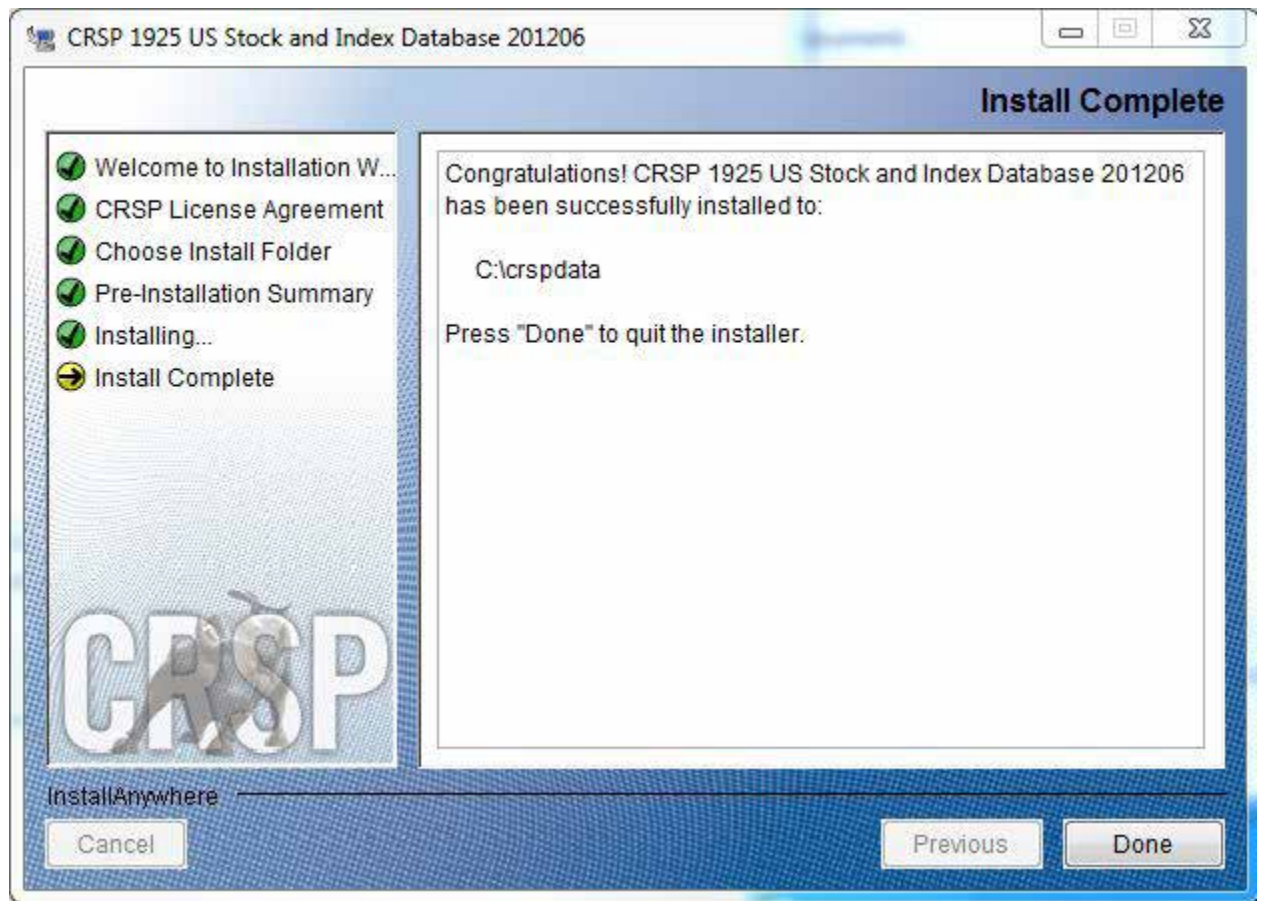
Summary information is displayed: Location, data components and the amount of space that is required for the data. Click on **Install** to proceed.



The screen will display the status of the installation.



A message indicating the success of the installation appears when the process is complete. Click **Done**.



LINUX AND SUN SOLARIS ENVIRONMENT VARIABLES

Important Change for Sun Solaris & Linux Installations:

Following previous installs, the `crsp.kshrc` file was run upon completion to set both environment variables and software alias values. This new version of InstallAnywhere sets the environment variables directly on the system when the software is installed. The `crsp.kshrc` file must still be run to set the aliases.

A user may wish to revert back to a previous cut of data or a previous version of the software. In order to do so, CRSP provides shell scripts for users to run that will create a custom-named `kshrc` file that the user may run to set environment variables at the session level. This process also provides a way for a system administrator to create a script that can be put into the system login process so that the environment variables are seen by all users.

To use a shell script for generating an initialization script file, follow these steps:

1. `cd` to the root directory where program files have been loaded.

```
cd accbin
```

2. If you are running `cs` shell, enter

```
source crsp_setup.csh
```

If you are running `ksh` or `bash` shell, enter

```
./ crsp_setup.sh
```

3. The script will prompt for data, root, and log directories. Follow the instructions on the prompts in

terms of trailing slashes in directory names.

The script will create new scripts, `mycrsp.cshrc` in `csh` or `mycrsp.kshrc` in `ksh`. `mycrsp` is the default that may be changed.

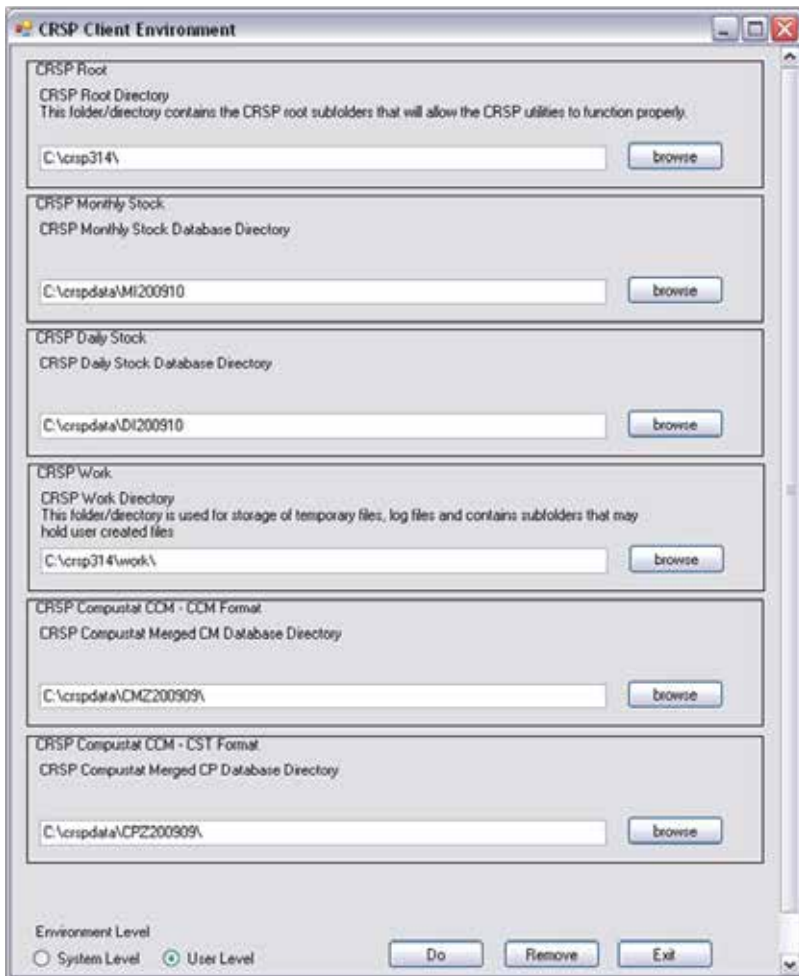
Note: When creating a custom `kshrc` file, be aware that it will overwrite a like-named file if one exists rather than create a new version. The `kshrc` file will overwrite all environment variables, so must be completely filled in.

`env | grep CRSP` can be used to check the CRSP environment variables set.

WINDOWS:

Location of the software and data may be checked by opening CRSP Client Environment from the CRSPAccess menu. This new utility provides users a quick and simple way of both checking and switching environment variables if necessary. Where, in the past, users had to go through the Control Panel to manipulate the environment variables, this can now be done by quick editing of the Client Environment screen.

Note: For subscribers of the CRSP Compustat Merged database, additional CCM database environments will be displayed for the location of the Compustat data.



UNINSTALL

To uninstall the data, go through Start > Control Panel > Add or Remove Programs. The data will appear in the Add or Remove Programs list as the volume label and cut date of the database. For example, the October cut of the 1925 US Stock and Index Database will be displayed as FIZ200910. Highlight your selection, click on the Change/Remove button and follow the prompts.